

Domestic market tumbled as the sentiment remained cautious after the government raised import tariffs on select goods and the central bank announced measures to ease liquidity concerns. These changes aim at narrowing the current account deficit (CAD). The new rates will be effective from midnight. The market breadth was weak. The Nifty 50 lost 76.25 points and settled the day at 10977.55. IT sector were the major gainer and realty sector and pharma were the major losers of the day.

Nifty



Global Markets

European shares fell on Thursday on anxiety over Italy's budget, with bank stocks the worst performers, also weighed on by a fall in U.S. bond yields after the Federal Reserve hiked rates again. The leading euro zone stock index slid 0.4%. Amazon.com Inc founder Jeff Bezos's space startup Blue Origin LLC has won a contract to supply engines for United Launch Alliance LLC (ULA), the Wall Street Journal reported on Thursday.

Indian Markets

INDEX	VALUE	CHANGE	%CHANGE
SENSEX	36324.17	-218.10	-0.60%
NIFTY	10977.55	-76.25	-0.69%
NIFTYBANK	25042.15	-334.15	-1.32%
INDIA VIX	16.9225	-0.16	-0.97%

INDEX	ADVANCE	DECLINE	UNCHANGED
NSE	473	1282	303
INDEX	ADVANCE	DECLINE	UNCHANGED
BSE	768	1814	156

International Markets

INDEX	VALUE	CHANGE	%CHANGE
DOW	26385.28	-106.93	-0.40%
NASDAQ	7990.37	-17.10	-0.21%
FTSE	7521.65	+10.16	+0.14%
SHANGHAI	2791.78	-15.03	-0.54%
NIKKEI	23796.74	-237.05	-1.00%

Gainers

LARGECAP	%CHANGE	MIDCAP	%CHANGE
INFRATEL	+3.23%	VAKRANGEE	+4.99%
TCS	+2.00%	BATAINDIA	+2.83%
ULTRACEMCO	+1.70%	APOLLOSHOSP	+2.32%
ASIANPAINT	+1.09%	SPARC	+0.98%
INFY	+0.90%	PAGEIND	+0.77%

Losers

LARGECAP	%CHANGE	MIDCAP	%CHANGE
YESBANK	-9.01%	IBREALEST	-10.89%
IBULHSGFIN	-5.83%	EDELWEISS	-10.72%
BAJFINANCE	-4.59%	RELCAPITAL	-7.88%
BAJAJFINSV	-3.82%	VOLTAS	-6.19%
MARUTI	-3.30%	MFSL	-5.44%

OUR PREVIOUS CALLS UPDATE

Intraday super stars

Date	Stocks	Entry	Exit	P/L
27/09	WOCKPHRMA(S)	587.70	581.80	+2007
27/09	EICHERMOT(S)	25035	24787.7	+2000

Multibagger

Date	Stock	Entry	Exit	P/L
27/09	RELIANCE(L)	1255	1262	+6000

Trifid special

Date	Stock	Entry	Exit	P/L
19/08	ONGC(L)	181.90	178.25	-6019

[For our next calls click here.....](#)

Stock Snippets

NBCC (India) has received in principle approval from Air India to monetize/redevelopment of Air India Land parcel at Baba Kharag Singh Marg, Connaught Place and Vasant Vihar in the national Capital.

Hero MotoCorp comes in limelight as the company will make an upward revision in the ex-showroom prices of its motorcycles and scooters, effective 3 October 2018. The reason behind price hike is to offset rising raw material (and commodity) costs and currency depreciation.

Hindustan Petroleum Corporation Ltd (HPCL) and Tata Power have announced the signing of a Memorandum of Understanding (MoU) for the setting up of commercial charging stations for electric vehicles (e-vehicles) at the HPCL retail outlets and other locations across India.

Larsen and Toubro (L&T) has bagged orders worth Rs1,400cr, under its power business, from the NTPC to set up Flue Gas Desulphurisation (FGD) systems.

HCL Technologies announced a five-year infrastructure services deal with global diversified mining business Anglo American. HCL will also continue to provide regional and local service desk support and end-user computing services.

Global Markets

Philippines stocks were higher after the close on Thursday, as gains in the Property, Holding Firms and Services sectors led shares higher. The PSEi Composite rose 0.72%.

Japan stocks were lower after the close on Thursday, as losses in the Finance & Investment, Power and Automobiles & Parts sectors led shares lower. The Nikkei 225 fell 0.82%.

Taiwan stocks were higher after the close on Thursday, as gains in the Plastic, Trading & Consumer Goods and Cement sectors led shares higher. The Taiwan Weighted gained 0.55%.

DATE: 27/09/18

FII/DII	CASH	MTD	YTD
FII	+552.44	-9290.14	-48354.43
DII	-186.69	+9248.00	+76915.21

Sectoral gainers and losers

SECTOR	%CHANGE IN MARKETCAP	ADV	DEC
Information Technology	1.09%	26	76
Consumer Non-durables	0.09%	14	15
Tobacco	0.04%	2	3
Oil & Gas	-0.40%	7	15
Cement & Construction	-0.45%	23	71
Utilities	-0.47%	6	20
Metals & Mining	-0.48%	18	60
Services	-0.64%	26	56
Miscellaneous	-0.89%	51	102
Chemicals	-0.99%	21	81
Media & Entertainment	-1.18%	13	30
Telecommunication	-1.40%	6	24
Food & Beverages	-1.55%	7	74
Engineering & Capital Goods	-1.56%	24	102
Pharmaceuticals	-1.75%	18	68
Retail & Real Estate	-1.77%	10	42
Manufacturing	-1.79%	46	151
Consumer Durables	-1.83%	4	6
Automotive	-1.85%	11	68
Conglomerates	-1.93%	5	25
Banking & Financial Services	-2.16%	38	147

Stocks breakout on moving average

STOCKS	PRICE	30DMA
GAIL	377.70	375.19
CYIENT	735.30	732.26
POWERGRID	194.55	194
IGARASHI	688.45	663.01



MINDTREE EQ tested the drawn support twice and closed with bearish biasness. The stock may fall if break the level.

SELL BELOW 1040.50 TARGETS 1030.10/1019.70/1009.30 SL 1050.90



TATACHEM EQ continues to trade lower sustaining below the 20 DMA and closed bearishly biased. The stock may fall further.

SELL BELOW 675 TARGETS 668.25/661.50/654.75 SL 681.75



TCS FUT formed bullish engulfing candle on daily chart and settled near to the immediate resistance level. The stock may give breakout ahead.

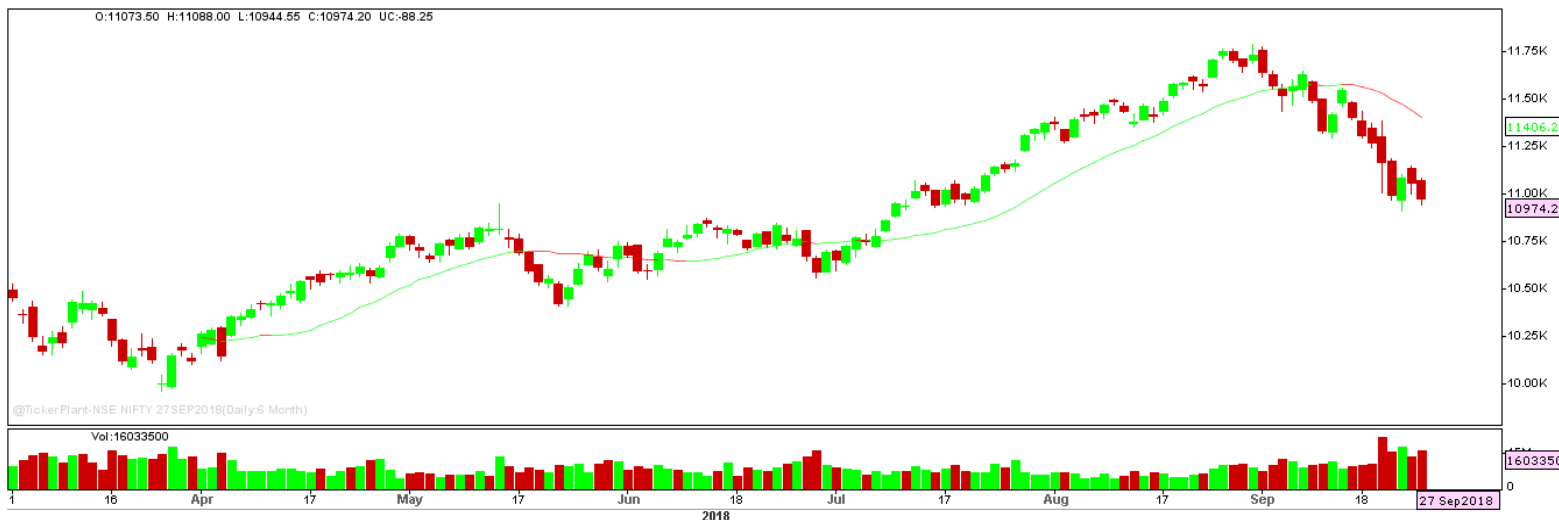
BUY ABOVE 2198 TARGETS 2204/2210 SL 2192



DABUR EQ formed short consolidation and closed forming hammer candle on daily chart. The stock may give breakout ahead.

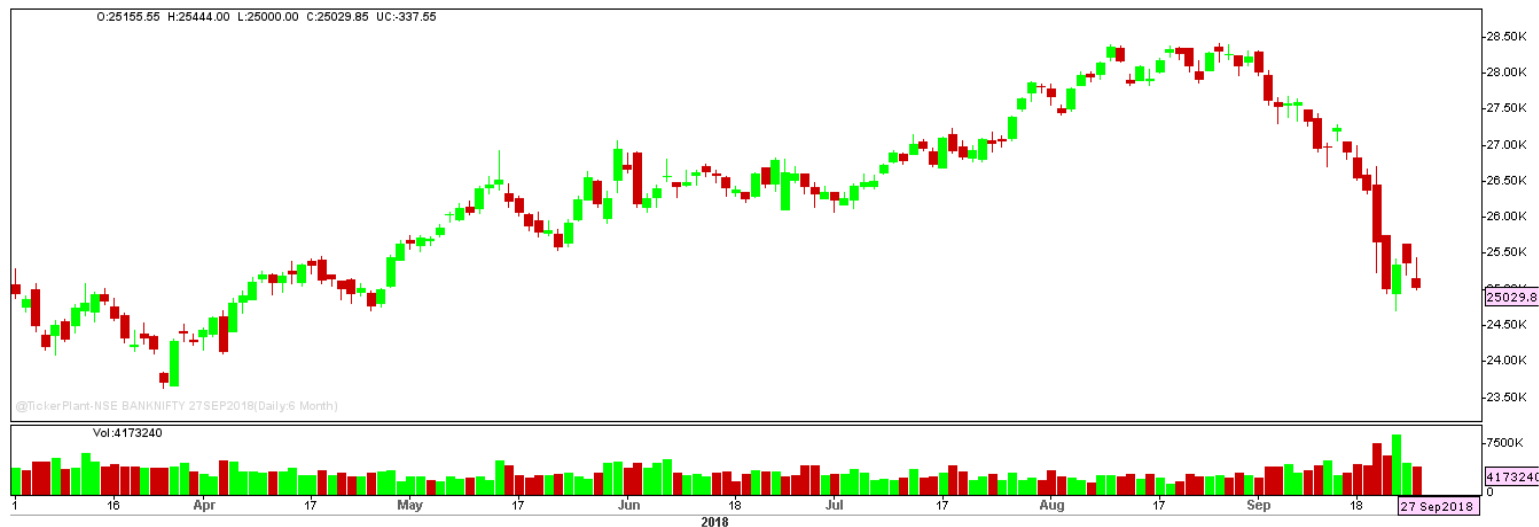
BUY ABOVE 442.35 TARGETS 451.20 SL 433.50

Nifty Technical's



Nifty continues to trade lower on the expiry trade session of September F&O series and settled lower in red at 10974.20. The next key support and resistance for the market is at 10900 and 11150.

Bank Nifty Technical's



Nifty Bank also traded in line with nifty 50 and ended lower at 25029.85. The next key support and resistance for the banking index is at 24700 and 25400.

Index	26-Sep-18	27-Sep-18	Change in OI	% Change
NIFTY	14446725	10293450	-4153275	-28.75%

SCRIPS IN F&O BAN FOR TRADE

NIL

Stocks at 52 Week High

Stocks	New 52 W/H	Previous High
CANTABIL	169	164.50
DEEPAKNTR	305	303.50
-	-	-
-	-	-
-	-	-

Stocks Approaching 52 Week High

Stocks	LTP	52W High
INFY	724.80	748.50
TECHM	746.05	780
BIOCON	708.40	718
JSWSTEEL	400.30	427.55
GAIL	377.70	399.40

Stocks rising continuously 2-3 days

Stocks	LTP
BPCL	372.20
NMDC	118.15
HINDPETRO	249.30
UBL	1422.50

Stocks at 52 Week Low

Stocks	New 52 W/L	Previous Low
8KMILES	201.40	211.95
APLAPOLLO	1325.10	1380
BANKBARODA	103.80	104.55
BSE	691.10	709
DCM	77.95	79

Stocks Approaching 52 Week Low

Stocks	LTP	52W Low
BLUEDART	3012.05	2980
ATULAUTO	337.80	334.75
ASHOKA	110.30	108.30
CENTURYTEX	850.35	836.50
RANEENGINE	451.95	448

Stocks falling continuously 2-3 days

Stocks	LTP
IDBI	49.35
CGPOWER	45.80
RPOWER	25.65
SYNDIBANK	31.80

Event Calendar(24thSEPTEMBER2018 to 29thSEPTEMBER2018)

24/09/18 (Mon)	25/09/18 (Tues)	26/09/18 (Wed)	27/09/18 (Thur)	28/09/18 (Fri)	29/09/18 (Sat)
		ECO DATA M3 MONEY SUPPLY DATA		ECO DATA FOREIGN DEBT DEPOSIT GROWTH	

DISCLAIMER

Trifid Research respects and values the Right to Privacy of each and every individual. We are esteemed by the relationship and by becoming our clients; you have a promise from our side that we shall remain loyal to all our clients and non-clients whose information resides with us. This Privacy Policy of Trifid Research applies to the current clients as well as former clients. Below are the word by word credentials of our Privacy Policy:

1. Your information, whether public or private, will not be sold, rented, exchanged, transferred or given to any company or individual for any reason without your consent.
2. The only use we will be bringing to your information will be for providing the services to you for which you have subscribed to us.
3. Your information given to us represents your identity with us. If any changes are brought in any of the fields of which you have provided us the information, you shall bring it to our notice by either calling us or dropping a mail to us.
4. In addition to the service provided to you, your information (mobile number, E-mail ID etc.) can be brought in use for sending you newsletters, surveys, contest information, or information about any new services of the company which will be for your benefit and while subscribing for our services, you agree that Trifid Research has the right to do so.
5. By subscribing to our services, you consent to our Privacy Policy and Terms of Use.
6. Trifid research does not guarantee or is responsible in any which way, for the trade execution of our recommendations, this is the sole responsibility of the client.
7. Due to the market's volatile nature, the trader may/ may not get appropriate opportunity to execute the trades at the mentioned prices and Trifid Research hold's no liability for any profit/ loss incurred whatsoever in this case.
8. It is the responsibility of the client to view the report timely from our Premium member section on our website: www.trifidresearch.com and the same will also be mailed to this registered email id.
9. Trifid research does not hold any liability or responsibility of delay in mail delivery of reports, as this depends on our mail service provider's network infrastructure.
10. The clients can call us for any query related to buying/selling the securities, based on our recommendations.