

Domestic market ended the volatile session with modest gains, backed by firmness in index pivotals. The Nifty 50 opened on positive note and traded with same sentiments throughout the week. The nifty 50 gained 40 points and settled the day at 10512.50. Pharma sector were the major gainer and Auto sector were the major losers of the day. On the macro front, the official Wholesale Price Index (WPI) for 'All Commodities' for September 2018 rose by 0.7% to 120.8 (provisional) from 120.0 (provisional) for the previous month.

## Global Markets

European shares failed to rebound as a flurry of threats such as trade wars, rising U.S. yields, a slowdown in China, Brexit and the Italy/EU budget row continued to weigh on markets.

British ConvaTec was the worst performer on the STOXX 600 down 28 percent, after cutting its forecast and announcing its CEO was stepping down.

INDEX	ADVANCE	DECLINE	UNCHANGED
NSE	1208	552	310
INDEX	ADVANCE	DECLINE	UNCHANGED
BSE	1417	927	133

## Gainers

LARGECAP	%CHANGE	MIDCAP	%CHANGE
DRREDDY	+4.76%	TV18BRDCST	+13.09%
CIPLA	+3.97%	AVANTIFEED	+9.55%
INFY	+3.64%	MPHASIS	+7.64%
HINDLACO	+2.56%	NATCOPHARM	+5.83%
ITC	+2.34%	VAKRANGEE	+4.89%

## Losers

LARGECAP	%CHANGE	MIDCAP	%CHANGE
HINDPETRO	-2.84%	RAJESHEXPO	-6.47%
BAJAJFINSV	-2.64%	DHFL	-3.64%
HINDUNILVR	-2.49%	VOLTAS	-2.01%
M&M	-2.42%	DISHTV	-1.81%
GAIL	-2.31%	BHARATFIN	-1.32%

## Nifty



## Indian Markets

INDEX	VALUE	CHANGE	%CHANGE
SENSEX	34865.10	+131.52	+0.38%
NIFTY	10512.50	+40.00	+0.38%
NIFTYBANK	25388.05	-7.80	-0.03%
INDIA VIX	18.8250	+0.20	+1.06%

## International Markets

INDEX	VALUE	CHANGE	%CHANGE
DOW	25339.99	+287.16	+1.15%
NASDAQ	7496.89	+167.83	+2.24%
FTSE	6988.63	-7.28	-0.10%
SHANGHAI	2568.09	-38.82	-1.51%
NIKKEI	22271.30	-423.36	-1.90%

## OUR PREVIOUS CALLS UPDATE

### Intraday super stars

Date	Stocks	Entry	Exit	P/L
15/10	ASIANPAINT(L)	1269	-	UNEX
15/10	JSWSTEEL(L)	382.75	-	UNEX

### Multibagger

Date	Stock	Entry	Exit	P/L
15/10	COALINDIA(L)	280.70	279.30	-3080

### Trifid special

Date	Stock	Entry	Exit	P/L
09/10	HINDUNILVR(L)	1543	1574.05	+6036

[For our next calls click here.....](#)

## Stock Snippets

**Larsen & Toubro** announced that its heavy engineering arm has secured additional orders worth Rs 1,050 crore in Q2 FY19 against stiff global competition.

**Dr. Reddy's Laboratories** has entered into a definitive agreement for the sale of its API manufacturing business unit located in Jeedimetla, Hyderabad, to Therapiva Private Ltd., an emerging generics pharmaceutical company.

**Lupin** has received a Tentative Approval from USFDA for Lurasidone HCL tablets. Latuda is an atypical antipsychotic which is indicated for the treatment of schizophrenia.

**Glenmark Pharmaceuticals Inc., USA** (Glenmark) has been granted final approval by the United States Food & Drug Administration (USFDA) for Hydrocortisone Valerate Cream USP, 0.2%, a generic version of Westcort Cream, 0.2%, of Sun Pharmaceutical Industries Inc.

Share prices of **GSS Infotech** gained 10% in late morning trade on Monday after the company acquired 100% stake in Nexii Labs Inc., USA

## Global Markets

Australia stocks were lower after the close on Monday, as losses in the IT, Financials and Utilities sectors led shares lower. At the close in Sydney, the S&P/ASX 200 declined 0.99% to hit a new 6-months low.

Taiwan stocks were lower after the close on Monday, as losses in the , Glass and Oil, Gas & Electricity sectors led shares lower. At the close in Taiwan, the Taiwan Weighted lost 1.44%.

Japan stocks were lower after the close on Monday, as losses in the Gas & Water, Railway & Bus and Insurance sectors led shares lower. At the close in Tokyo, the Nikkei 225 fell 1.87% to hit a new 1-month low.

DATE: 15/10/18

FII/DII	CASH	MTD	YTD
FII	+67.86	-17816.70	-69123.53
DII	+294.75	+15797.20	+95967.75

## Sectoral gainers and losers

SECTOR	%CHANGE IN MARKETCAP	ADV	DEC
Tobacco	2.62%	5	0
Pharmaceuticals	2.14%	66	20
Information Technology	1.95%	77	27
Manufacturing	1.46%	151	54
Telecommunication	1.28%	22	6
Media & Entertainment	1.18%	24	19
Oil & Gas	0.95%	14	8
Conglomerates	0.66%	21	6
Services	0.66%	57	23
Miscellaneous	0.63%	92	55
Utilities	0.47%	13	11
Chemicals	0.44%	75	27
Food & Beverages	0.44%	64	16
Engineering & Capital Goods	0.24%	82	46
Banking & Financial Services	0.19%	126	60
Automotive	-0.29%	56	26
Cement & Construction	-0.49%	51	41
Metals & Mining	-0.49%	45	35
Consumer Non-durables	-1.29%	20	9
Consumer Durables	-1.44%	6	5
Retail & Real Estate	-1.88%	36	15

## Stocks breakout on moving average

STOCKS	PRICE	30DMA
VENKEYS	2576.45	2485.07
DRREDDY	2566.85	2515.55
TV18BRDCST	39.75	39.35
HDFCBANK	2008.05	2002.46



ACC EQ inched higher in the previous session towards the immediate resistance and closed near to it. If it sustains above it, then the stock may show up move.

**BUY ABOVE 1535.25 TARGETS 1550.60/1566/1581.35 SL 1519.90**



CIPLA EQ is able to sustain near 8 day EMA on daily charts and it appears that the stock may give positive momentum if it sustains above the mentioned level.

**BUY ABOVE 651 TARGETS 657.55/664.10/670.55 SL 644.50**



CANBK FUT surged higher forming reversal pattern on daily chart and settled bullishly biased. The stock fut may surge higher.

**BUY ABOVE 234.80 TARGETS 236.30/237.80 SL 233.30**



HINDALCO EQ showed buying interest and settled near the resistance level. The stock may surge higher if it surpasses the given level.

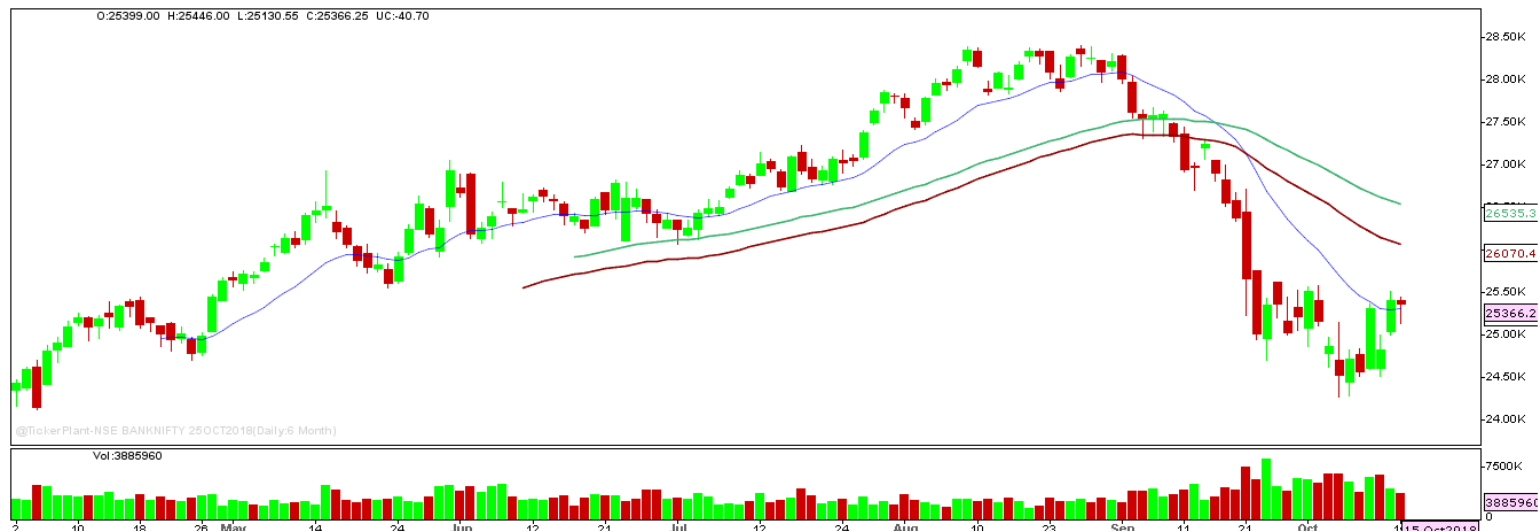
**BUY ABOVE 228.30 TARGETS 232.90 SL 223.75**

## Nifty Technical's



Nifty traded marginally higher in volatile trade session and ended a bit higher 1st day of the week at 10517.40. The next key support and resistance for the market is at 10400 and 10590.

## Bank Nifty Technical's



Nifty bank also remained volatile witnessing both side action in intraday trade session and ended marginally lower at 25366.20. The next key support and resistance for the banking index is at 25100 and 25625 respectively..

Index	12-Oct-18	15-Oct-18	Change in OI	% Change
NIFTY	19254525	19787700	+533175	+2.77%

SCRIPS IN F&O BAN FOR TRADE  
ADANIPOWER, IDBI

## Stocks at 52 Week High

Stocks	New 52 W/H	Previous High
KILITCH	176.40	162.75
TIJARIA	18.75	18.05
-	-	-
-	-	-
-	-	-

## Stocks Approaching 52 Week High

Stocks	LTP	52W High
DIVISLAB	1299.75	1425
WIPRO	319.95	338
GILLETTE	6600.95	7100
CIPLA	647.85	678.45
DRREDDY	2566.85	2670.80

## Stocks rising continuously 2-3 days

Stocks	LTP
MCDOWELL-N	523.00
HINDPETRO	219.10
BPCL	288.40
PIDILTIND	988.75

## Stocks at 52 Week Low

Stocks	New 52 W/L	Previous Low
BRNL	130.90	131
JKLAKSHMI	265	267.45
POKARNA	125	125
SUNDARMFN	1337.50	1351.050
-	-	-

## Stocks Approaching 52 Week Low

Stocks	LTP	52W Low
VRLLG	256.50	253.15
CRISIL	1620	1594.15
DBCORP	189.60	185.10
BLUEDART	2805.35	2732.05
RANEENGINE	454.90	448

## Stocks falling continuously 2-3 days

Stocks	LTP
TCS	1918.30
HCLTECH	985.15
TECHM	693.80
AUROPHARMA	735.50

## Event Calendar(15<sup>th</sup>OCTOBER2018 to 20<sup>th</sup>OCTOBER2018)

15/10/18 (Mon)	16/10/18 (Tues)	17/10/18 (Wed)	18/10/18 (Thur)	19/10/18 (Fri)	20/10/18 (Sat)
RESULT	RESULT	RESULT	MKT OFF ON	RESULT	RESULT
DELTACORP,	INFY	MINDTREE,	ACCOUNT OF	SBI LIFE	HDFCBANK
INDUSINDBANK,	FEDERALBANK	RELIANCE,	DASHERA	INSURANCE,	
ZEEL,	HEROMOTOCO	ACC,		ULTRATECEMCO,	
IBULHSGFIN		HAVELLS		ECO DATA	
ECO DATA				FX RESERVE	
WPI INFLATION				DATA	
TRADE BALANCE					

## DISCLAIMER

Trifid Research respects and values the Right to Privacy of each and every individual. We are esteemed by the relationship and by becoming our clients; you have a promise from our side that we shall remain loyal to all our clients and non-clients whose information resides with us. This Privacy Policy of Trifid Research applies to the current clients as well as former clients. Below are the word by word credentials of our Privacy Policy:

1. Your information, whether public or private, will not be sold, rented, exchanged, transferred or given to any company or individual for any reason without your consent.
2. The only use we will be bringing to your information will be for providing the services to you for which you have subscribed to us.
3. Your information given to us represents your identity with us. If any changes are brought in any of the fields of which you have provided us the information, you shall bring it to our notice by either calling us or dropping a mail to us.
4. In addition to the service provided to you, your information (mobile number, E-mail ID etc.) can be brought in use for sending you newsletters, surveys, contest information, or information about any new services of the company which will be for your benefit and while subscribing for our services, you agree that Trifid Research has the right to do so.
5. By subscribing to our services, you consent to our Privacy Policy and Terms of Use.
6. Trifid research does not guarantee or is responsible in any which way, for the trade execution of our recommendations, this is the sole responsibility of the client.
7. Due to the market's volatile nature, the trader may/ may not get appropriate opportunity to execute the trades at the mentioned prices and Trifid Research hold's no liability for any profit/ loss incurred whatsoever in this case.
8. It is the responsibility of the client to view the report timely from our Premium member section on our website: [www.trifidresearch.com](http://www.trifidresearch.com) and the same will also be mailed to this registered email id.
9. Trifid research does not hold any liability or responsibility of delay in mail delivery of reports, as this depends on our mail service provider's network infrastructure.
10. The clients can call us for any query related to buying/selling the securities, based on our recommendations.