

Key benchmark indices logged modest losses in a volatile session of trade led by slide in index pivotals Reliance Industries, IndusInd Bank and Kotak Mahindra Bank. Local stocks trimmed gains after a firm start on steady buying demand in index pivotals. Benchmark turned range bound in afternoon trade and then a sudden sell-off pulled the key indices to day's low in late trade. The Nifty 50 lost 58.30 points and settled the day at 10245.25. Financial service sector were the major gainer and Media sector were the major loser of the day.

Global Markets

Philips shares tumbled the most in more than seven years after the Dutch health technology company's third-quarter profit missed estimates and growth in the personal-health division was disappointing. European shares rose in early deals on Monday after Moody's decision to keep Italy's sovereign rating stable eased worries over a sell-off in the country's government bonds, boosting shares in Italian banks.

INDEX	ADVANCE	DECLINE	UNCHANGED
NSE	508	1261	297
INDEX	ADVANCE	DECLINE	UNCHANGED
BSE	824	1774	166

Gainers

LARGECAP	%CHANGE	MIDCAP	%CHANGE
IBULHSGFIN	+8.93%	MUTHOOTFIN	+5.27%
ICICIBANK	+4.04%	INDHOTEL	+4.91%
EICHERMOT	+4.03%	GLENMARK	+2.60%
NTPC	+2.20%	TORNTPHARM	+2.34%
BAJAJAUTO	+1.74%	JINDALSTEL	+1.35%

Losers

LARGECAP	%CHANGE	MIDCAP	%CHANGE
INDUSINDBK	-6.96%	DHFL	-10.52%
BPCL	-4.51%	DBL	-8.14%
ULTRACEMCO	-3.95%	DISHTV	-7.35%
RELIANCE	-3.46%	BHARATFIN	-6.77%
ASIANPAINT	-3.12%	MFSL	-6.55%

Nifty



Indian Markets

INDEX	VALUE	CHANGE	%CHANGE
SENSEX	34134.38	-181.25	-0.53%
NIFTY	10245.25	-58.30	-0.57%
NIFTYBANK	25078.60	-7.20	-0.03%
INDIA VIX	21.3450	+1.56	+7.87%

International Markets

INDEX	VALUE	CHANGE	%CHANGE
DOW	25444.34	+64.89	+0.26%
NASDAQ	7449.03	-36.11	-0.48%
FTSE	7110.24	+60.44	+0.85%
SHANGHAI	2654.88	+104.41	+3.93%
NIKKEI	22614.82	+82.74	+0.37%

OUR PREVIOUS CALLS UPDATE

Intraday super stars

Date	Stocks	Entry	Exit	P/L
22/10	WOCKPHARM(S)	475	470.25	+2000
22/10	TATAMTRDVR(S)	94.95	93.05	+4002

Multibagger

Date	Stock	Entry	Exit	P/L
22/10	ITC(L)	291.50	292.75	+3000

Trifid special

Date	Stock	Entry	Exit	P/L
19/10	ADANIEN(L)	163.70	160.45	-5956

[For our next calls click here.....](#)

Stock Snippets

Shares of **Biocon** were trading 3%% up after the company received a positive opinion from the European Medicines Agency's Committee for Medicinal Products for Human Use (CHMP) for its Ogivri drug.

Share prices of **Unichem Laboratories** surged 2.4% after the company's API manufacturing facilities at Pithampur and Roha have received Establishment Inspection Reports (EIRs) from the USFDA indicating closure of inspections at both the facilities.

Indiabulls Housing Finance, Delhi-headquartered mortgage lender, is in spotlight as company is planning to sell all or part of its 18.7% stake in UK-based OakNorth Holdings

Lupin Neurosciences receives marketing authorization for NaMuscla (mexiletine hydrochloride); drug used for symptomatic treatment of myotonia in adults with non-dystrophic myotonic (NDM) disorders.

Hero Moto Corp share prices rose 0.74% after the company launched the new Destini 125 scooter. It aims to fortify the company's presence in the fast-growing 125cc scooter segment.

Global Markets

Japan stocks were higher after the close on Monday, as gains in the Construction, Chemical and Food sectors led shares higher. The Nikkei 225 added 0.37%.

Taiwan stocks were higher after the close on Monday, as gains in the Oil, Gas & Electricity, Optoelectronic and Electronic Parts/Components sectors led shares higher. The Taiwan Weighted added 0.55%.

China stocks were higher after the close on Monday, as gains in the Travel & Leisure, Software & Computer Services and Technology sectors led shares higher. The Shanghai Composite gained 4.09%, while the SZSE Component index climbed 4.89%

DATE: 22/10/18

FII/DII	CASH	MTD	YTD
FII	-511.91	-19972.48	-71559.35
DII	+303.21	+15814.60	+96985.15

Sectoral gainers and losers

SECTOR	%CHANGE IN MARKETCAP	ADV	DEC
Tobacco	0.73%	3	2
Consumer Non-durables	0.65%	21	28
Metals & Mining	0.39%	43	93
Consumer Durables	0.26%	4	11
Conglomerates	-0.19%	8	20
Utilities	-0.25%	10	15
Services	-0.40%	45	95
Manufacturing	-0.52%	138	236
Pharmaceuticals	-0.53%	38	89
Food & Beverages	-0.56%	45	78
Chemicals	-0.66%	63	130
Engineering & Capital Goods	-0.82%	56	146
Telecommunication	-0.85%	12	26
Miscellaneous	-1.23%	83	177
Automotive	-1.24%	28	81
Banking & Financial Services	-1.59%	81	220
Information Technology	-2.06%	50	94
Media & Entertainment	-2.12%	22	36
Oil & Gas	-2.16%	11	13
Retail & Real Estate	-2.19%	15	57
Cement & Construction	-3.24%	31	86

Stocks breakout on moving average

STOCKS	PRICE	30DMA
ICICIBANK	327.10	317.81
CUPID	178	173.80
COLPAL	1124.75	1100.84
INDHOTEL	128.25	126.47



CANBK EQ is being trading on its short term sell trend and rested near the support level. The stock may continue to trade lower.

SELL BELOW 209.30 TARGETS 207.20/205.10/203 SL 211.40



BHARATFORG EQ traded lower forming bearish engulfing candle on daily chart to close near to the support level. The stock may give lower breakout if breaches the support level.

SELL BELOW 551.50 TARGETS 546/540.45/534.95 SL 557



CESC FUT formed bearish engulfing candlestick and tested the support so drawn to close lower. The stock fut may continue to trade southwards.

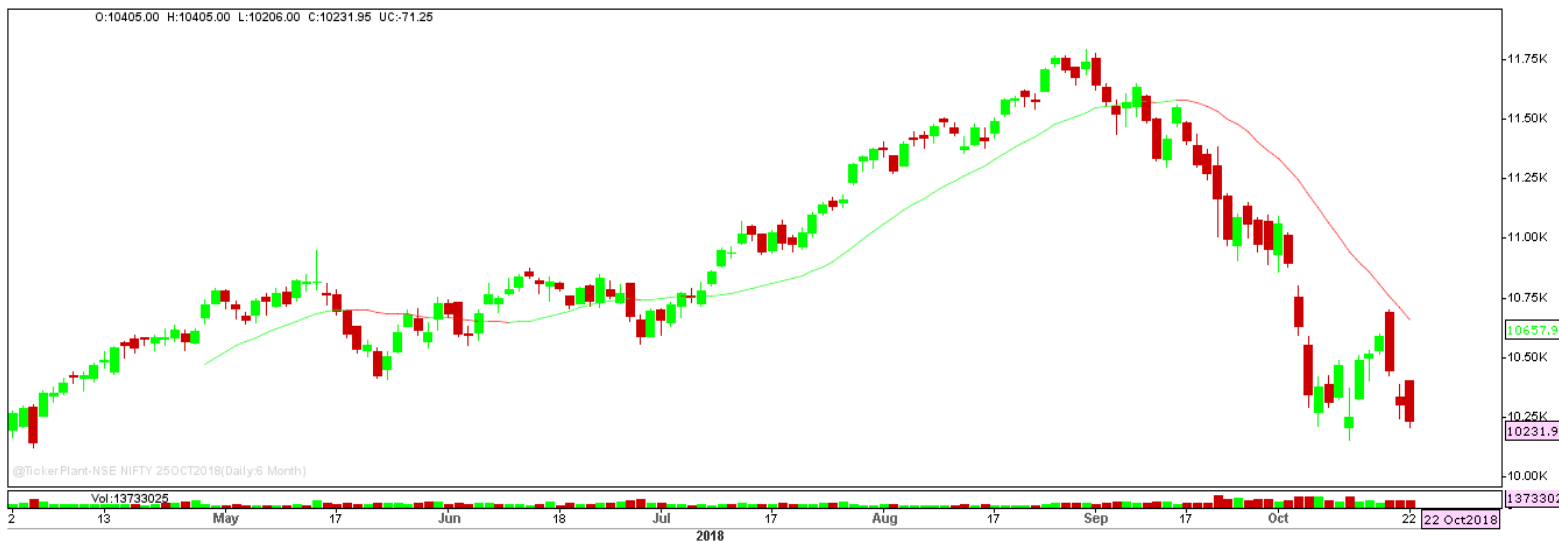
SELL BELOW 884 TARGETS 878.55/873.10 SL 889.45



SUNPHARMA EQ formed bullish engulfing candle on daily chart and closed bullish biased. The stock may give breakout and trade higher.

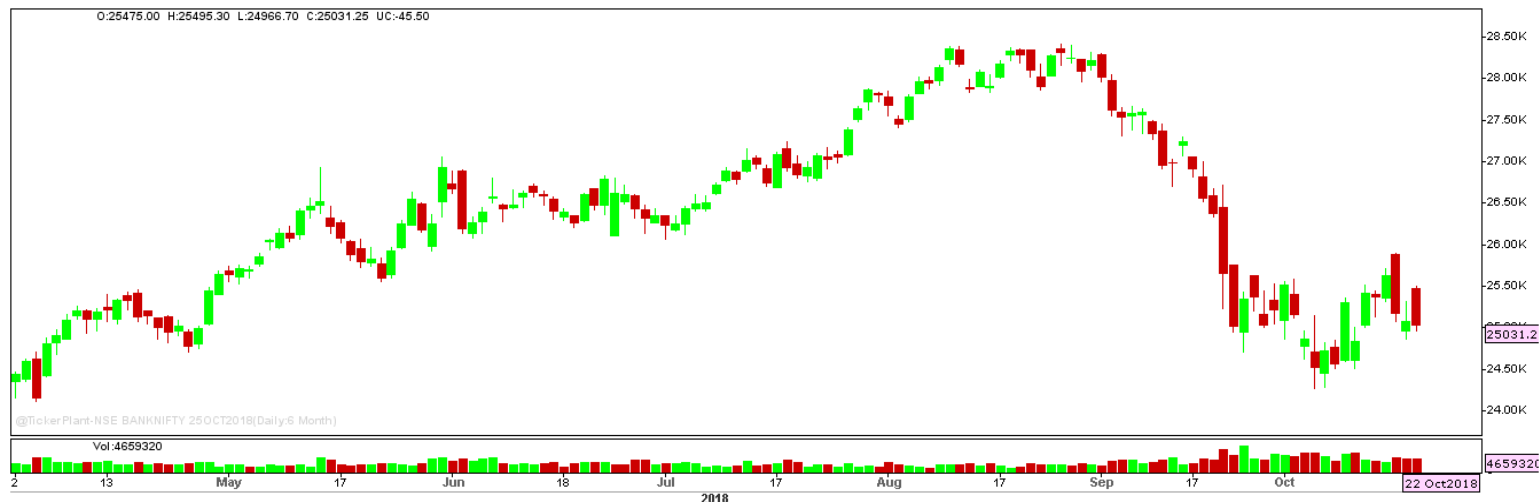
BUY ABOVE 612 TARGETS 624.25 SL 599.75

Nifty Technical's



Nifty started the week on bearish note forming bearish engulfing candle formation on daily chart to close at 10231.95. The next key support and resistance for the market is at 10150 and 10400.

Bank Nifty Technical's



Nifty bank also tumbled and settled marginally lower at 25031.25. The next key support and resistance for the banking index is at 24850 and 25500.

Index	19-Oct-18	22-Oct-18	Change in OI	% Change
NIFTY	19529550	17153025	-2376525	-12.17%

SCRIPS IN F&O BAN FOR TRADE
ADANIENET, ADANIPOWER, JETAIRWAYS

Stocks at 52 Week High

Stocks	New 52 W/H	Previous High
-	-	-
-	-	-
-	-	-
-	-	-
-	-	-

Stocks Approaching 52 Week High

Stocks	LTP	52W High
BIOCON	673.50	718
WIPRO	321.30	338
GILLETTE	6584.00	7100
CIPLA	633.40	678.45
DRREDDY	2534.45	2670.80

Stocks rising continuously 2-3 days

Stocks	LTP
ICICIBANK	327.10
HDFCBANK	1998.90
ADANI PORTS	315.40
COLPAL	1124.75

Stocks at 52 Week Low

Stocks	New 52 W/L	Previous Low
8KMILES	103.05	108.45
BRNL	121.70	124.75
CERA	2340	2386
DHFL	185.60	193.40
DISHTV	42.80	45.80

Stocks Approaching 52 Week Low

Stocks	LTP	52W Low
TATACOMM	447.35	442.55
PEL	1877.35	1852.65
HDFC	1663.80	1638
DYNAMATECH	1400	1379.15
-	-	-

Stocks falling continuously 2-3 days

Stocks	LTP
INDUSINDBANK	1449.45
ASIANPAINTS	1200.40
IOC	129.75
ONGC	155.95

Event Calendar(22ndOCTOBER2018 to 27thOCTOBER2018)

22/10/18 (Mon)	23/10/18 (Tues)	24/10/18 (Wed)	25/10/18 (Thur)	26/10/18 (Fri)	27/10/18 (Sat)
RESULTS CCL, JUBLIANT, MAHSCOOTER	RESULTS MCX, HCLTECH BAJAJFINSERV, RBL BANK, AMBUJACEMTN, ICICI PRUDENTIAL	RESULT WIPRO, BAJAJ- AUTO, IDFC BANK, RADICO, INFRATEL, ECO DATA M3 MONEY SUPPLY DATA	RESULTS PRAJIND, SHALBY, BHARTIARTL, L&T TECHNOLOGY, HIL	RESULT ICICIBANK, ATUL UPL, SUBROS ECO DTA BANK LOAN GROWTH, DEPOSIT GROWTH,FX RESERVE	RESULT HT MEDIA

DISCLAIMER

Trifid Research respects and values the Right to Privacy of each and every individual. We are esteemed by the relationship and by becoming our clients; you have a promise from our side that we shall remain loyal to all our clients and non-clients whose information resides with us. This Privacy Policy of Trifid Research applies to the current clients as well as former clients. Below are the word by word credentials of our Privacy Policy:

1. Your information, whether public or private, will not be sold, rented, exchanged, transferred or given to any company or individual for any reason without your consent.
2. The only use we will be bringing to your information will be for providing the services to you for which you have subscribed to us.
3. Your information given to us represents your identity with us. If any changes are brought in any of the fields of which you have provided us the information, you shall bring it to our notice by either calling us or dropping a mail to us.
4. In addition to the service provided to you, your information (mobile number, E-mail ID etc.) can be brought in use for sending you newsletters, surveys, contest information, or information about any new services of the company which will be for your benefit and while subscribing for our services, you agree that Trifid Research has the right to do so.
5. By subscribing to our services, you consent to our Privacy Policy and Terms of Use.
6. Trifid research does not guarantee or is responsible in any which way, for the trade execution of our recommendations, this is the sole responsibility of the client.
7. Due to the market's volatile nature, the trader may/ may not get appropriate opportunity to execute the trades at the mentioned prices and Trifid Research hold's no liability for any profit/ loss incurred whatsoever in this case.
8. It is the responsibility of the client to view the report timely from our Premium member section on our website: www.trifidresearch.com and the same will also be mailed to this registered email id.
9. Trifid research does not hold any liability or responsibility of delay in mail delivery of reports, as this depends on our mail service provider's network infrastructure.
10. The clients can call us for any query related to buying/selling the securities, based on our recommendations.