

Key benchmark indices logged modest gains in a highly volatile trading session on bargain hunting after a four-day slide. Stocks trimmed gains in morning trade and hovered in a small range with positive bias in early afternoon trade. Fresh selling in index pivotals pulled the key benchmark indices in negative zone in mid-afternoon trade. Stocks staged a comeback in late trade. The Nifty 50 gained 77.95 points and settled the day at 10224.75. Realty sector were the major gainer and pharma sector were the major loser of the day.

## Nifty



## Global Markets

European equities advanced after tumbling to a 22-month low as investors turned their attention to positive earnings' surprises. The Stoxx Europe 600 Index added 0.4%. HSBC Holdings announced that it is teaming up with online lender Avant to offer unsecured loans to consumers. In the first half of 2019, HSBC's U.S. arm will utilize Avant's platform to offer personal loans as high as \$30,000 with terms up to five years.

## Indian Markets

INDEX	VALUE	CHANGE	%CHANGE
SENSEX	34033.96	+186.73	+0.55%
NIFTY	10224.75	+77.95	+0.77%
NIFTYBANK	25064.20	+91.75	+0.37%
INDIA VIX	18.5325	-.50	-2.65%

INDEX	ADVANCE	DECLINE	UNCHANGED
NSE	956	794	308
INDEX	ADVANCE	DECLINE	UNCHANGED
BSE	1363	1203	150

## International Markets

INDEX	VALUE	CHANGE	%CHANGE
DOW	25191.43	-125.98	-0.50%
NASDAQ	7437.54	-31.09	-0.42%
FTSE	7031.91	+76.70	+1.09%
SHANGHAI	2603.30	+8.47	+0.33%
NIKKEI	22091.18	+80.40	+0.36%

## Gainers

LARGECAP	%CHANGE	MIDCAP	%CHANGE
BAJFINANCE	+11.97%	M&MFIN	+7.12%
BHARTIARTL	+8.97%	GRUH	+6.84%
HINDPETRO	+6.08%	RELINFRA	+6.26%
IOC	+5.77%	VAKRANGEE	+4.86%
HINDALCO	+5.01%	IGL	+4.76%

## Losers

LARGECAP	%CHANGE	MIDCAP	%CHANGE
BAJAJAUTO	-4.54%	JINDALSTEL	-4.00%
YESBANK	-4.15%	MPHASIS	-3.98%
DRREDDY	-2.17%	GRAPHITE	-3.67%
GRASIM	-2.12%	EDELWEISS	-1.64%
ADANIPORTS	-1.82%	APOLLOHOSP	-1.49%

## OUR PREVIOUS CALLS UPDATE

### Intraday super stars

Date	Stocks	Entry	Exit	P/L
24/10	AUROPHARMA(S)	732	717.35	+4002
24/10	GODREJIND(S)	442.90	-	UNEX

### Multibagger

Date	Stock	Entry	Exit	P/L
24/10	HINDPETRO(L)	222.20	226	+5985

### Trifid special

Date	Stock	Entry	Exit	P/L
24/10	CADILAHG(L)	380.80	373.15	+6026

[For our next calls click here.....](#)

## Stock Snippets

**VA Tech Wabag (WABAG)**, a leading pure play water technology Indian multinational, has been awarded a first major EPC order worth Qatari Riyal Rs555cr from Public Works Authority of Qatar (ASHGHAL).

**Sun Pharma** has announced that its novel drug Ilumya (tildrakizumab) 100 mg/mL is now available in the United States. Ilumya is an injectable interleukin-23 (IL-23) inhibitor approved by the USFDA for the treatment of moderate-to-severe plaque psoriasis in adults.

**Bharti Airtel** share prices rose 3.41%. Airtel Africa, a UK incorporated subsidiary of Bharti Airtel, announced that six leading global investors comprising Warburg Pincus, Temasek, Singtel, SoftBank Group International and others have agreed to invest \$1.25 billion.

**DCM Shriram** started commercial production at Chlor-alkali line at its Rajasthan Unit.

**Bank of India** puts 95 accounts with Rs 10,710.22cr outstanding balance for sale to ARCs/NBFCs/FIs/Bks

## Global Markets

Japan stocks were higher after the close on Wednesday, as gains in the Gas & Water, Marine Transport and Construction sectors led shares higher. The Nikkei 225 gained 0.40%.

Taiwan stocks were lower after the close on Wednesday, as losses in the , Cement and Cement & Glass sectors led shares lower. The Taiwan Weighted fell 0.16% to hit a new 52-week low.

Australia stocks were lower after the close on Wednesday, as losses in the Energy, Resources and Consumer Discretionary sectors led shares lower. The S&P/ASX 200 fell 0.24% to hit a new 6-months low.

DATE: 24/10/18

FII/DII	CASH	MTD	YTD
FII	-2046.54	-22359.37	-73946.24
DII	+1873.51	+17804.52	+98975.07

## Sectoral gainers and losers

SECTOR	%CHANGE IN MARKETCAP	ADV	DEC
Automotive	-	-	-
Banking & Financial Services	-	-	-
Cement & Construction	-	-	-
Chemicals	-	-	-
Conglomerates	-	-	-
Consumer Durables	-	-	-
Consumer Non-durables	-	-	-
Engineering & Capital Goods	-	-	-
Food & Beverages	-	-	-
Information Technology	-	-	-
Manufacturing	-	-	-
Media & Entertainment	-	-	-
Metals & Mining	-	-	-
Miscellaneous	-	-	-
Oil & Gas	-	-	-
Pharmaceuticals	-	-	-
Retail & Real Estate	-	-	-
Services	-	-	-
Telecommunication	-	-	-
Tobacco	-	-	-
Utilities	-	-	-

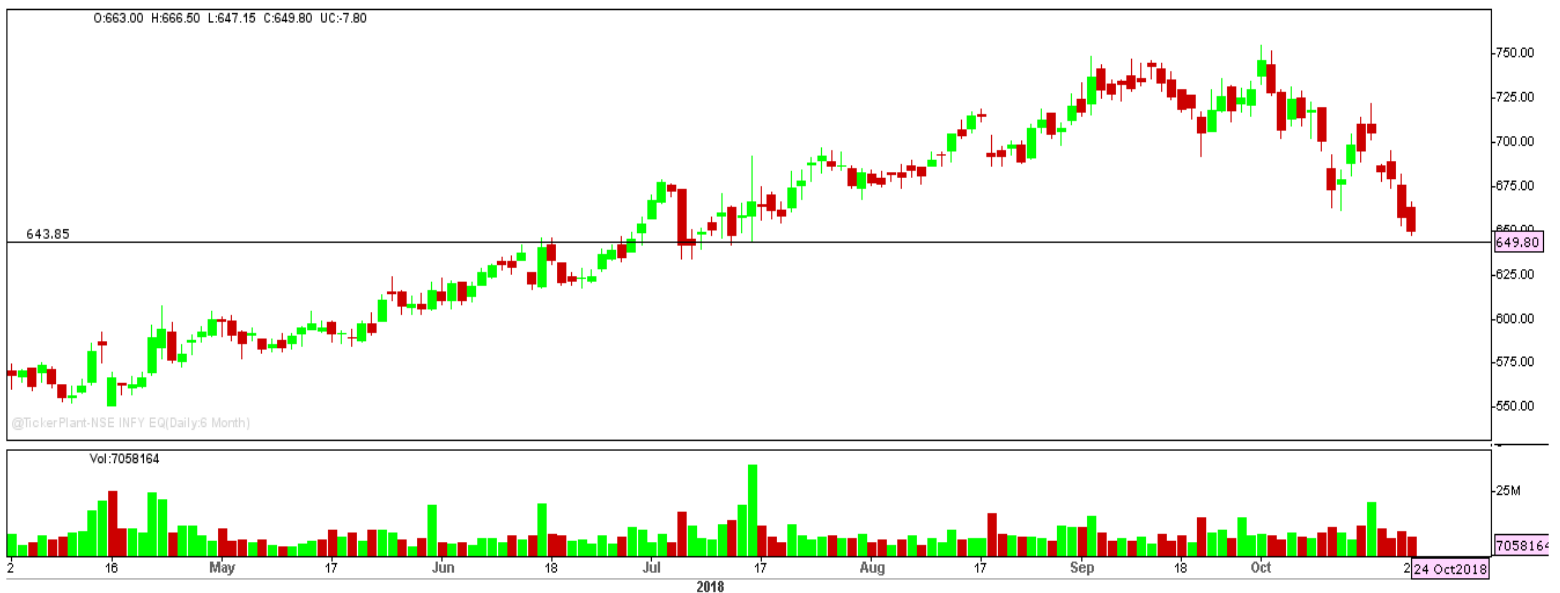
## Stocks breakout on moving average

STOCKS	PRICE	30DMA
MCX	819.05	744.65
BHEL	75.95	73.88
HINDPETRO	232.75	228.53
JETAIRWAYS	220.65	218.02



YESBANK EQ formed bearish engulfing candle formation on daily chart and rested near the support level. Thus lower breakout may be seen ahead.

**SELL BELOW 202 TARGETS 200/197.95/195.95 SL 204**



INFY EQ is being trading lower from last couple of trading sessions with sustainable sell side volume. The stock may fall further below the drawn support.

**SELL BELOW 643.85 TARGETS 637.40/630.95/624.55 SL 650.30**



HINDUNILVR FUT retrived from lower level, taking the support of trend line and closed bullishy biased. The stock fut may trade higher above the drawn resistance level.

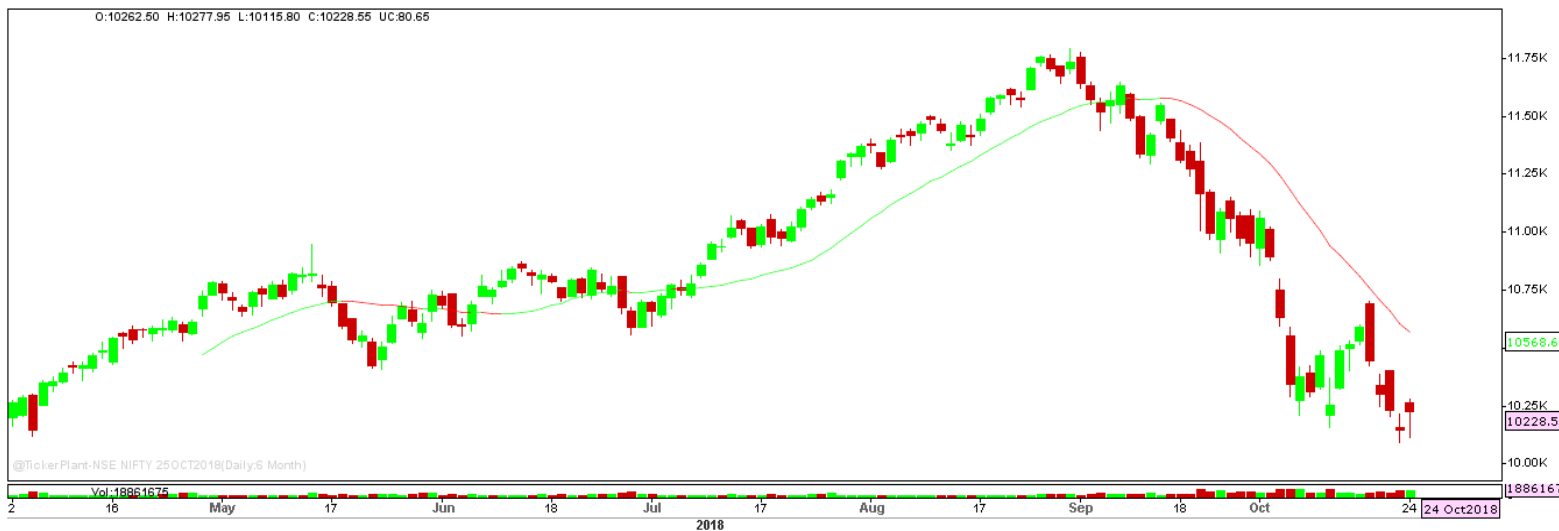
**BUY ABOVE 1587.25 TARGETS 1592.25/1597.25 SL 1582.25**



M&MFIN EQ gave trendline breakout and settled bullish near the immediate resistance level so drawn. The stock may give breakout and trade higher.

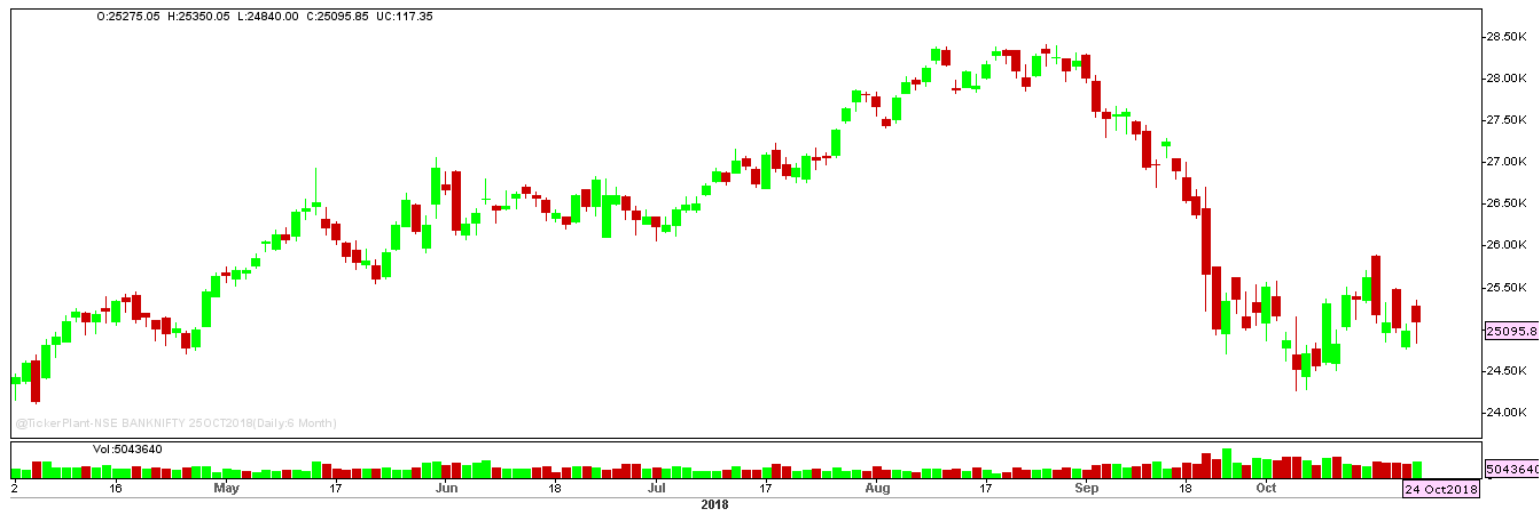
**BUY ABOVE 404.55 TARGETS 412.65 SL 396.45**

## Nifty Technical's



Nifty traded higher on account of short covering seen before F&O expiry due tomorrow and settled at 10228.55. The next key support and resistance for the market is at 10100 and 10350.

## Bank Nifty Technical's



Nifty bank too inched higher before the expiry and settled at 25095.85. The next key support and resistance for the banking index is at 24850 and 25350.

Index	23-Oct-18	24-Oct-18	Change in OI	% Change
NIFTY	13082325	9104925	-3977400	-30.40%

**SCRIPS IN F&O BAN FOR TRADE**  
ADANIENIT, ADANIPOWER, DHFL

## Stocks at 52 Week High

Stocks	New 52 W/H	Previous High
KSB	799	744.75
-	-	-
-	-	-
-	-	-
-	-	-

## Stocks Approaching 52 Week High

Stocks	LTP	52W High
ATUL	3180	3415
WIPRO	307.95	338
GILLETTE	6585	7100
CIPLA	621.25	678.45
DRREDDY	2481	2420

## Stocks rising continuously 2-3 days

Stocks	LTP
M&MFIN	401.00
BHARTIARTL	315.85
HINDPETRO	232.75
IOC	137.55

## Stocks at 52 Week Low

Stocks	New 52 W/L	Previous Low
8KMILES	93.05	97.90
BSE	605.05	610.05
CRISIL	1347	1347
GHCL	192.10	197.40
GRASIM	797	819.10

## Stocks Approaching 52 Week Low

Stocks	LTP	52W Low
RUSHIL	558.55	555
CERA	2345	2340
MARUTI	6753	6661
JKCEMENT	671	666.05
-	-	-

## Stocks falling continuously 2-3 days

Stocks	LTP
DRREDDY	2434.30
GRASIM	809.00
ZEEL	354.25
INFY	649.80

## Event Calendar(22<sup>nd</sup>OCTOBER2018 to 27<sup>th</sup>OCTOBER2018)

22/10/18 (Mon)	23/10/18 (Tues)	24/10/18 (Wed)	25/1/18 (Thur)	26/10/18 (Fri)	27/10/18 (Sat)
RESULTS CCL, JUBLIANT, MAHSCOOTER	RESULTS MCX, HCLTECH BAJAJFINSERV, RBL BANK, AMBUJACEMTN, ICICI PRUDENTIAL	RESULT WIPRO, BAJAJ- AUTO, IDFC BANK, RADICO, INFRATEL, ECO DATA M3 MONEY SUPPLY DATA	RESULTS PRAJIND, SHALBY, BHARTIARTL, L&T TECHNOLOGY, HIL	RESULT ICICIBANK, ATUL UPL, SUBROS ECO DTA BANK LOAN GROWTH, DEPOSIT GROWTH,FX RESERVE	RESULT HT MEDIA

## DISCLAIMER

Trifid Research respects and values the Right to Privacy of each and every individual. We are esteemed by the relationship and by becoming our clients; you have a promise from our side that we shall remain loyal to all our clients and non-clients whose information resides with us. This Privacy Policy of Trifid Research applies to the current clients as well as former clients. Below are the word by word credentials of our Privacy Policy:

1. Your information, whether public or private, will not be sold, rented, exchanged, transferred or given to any company or individual for any reason without your consent.
2. The only use we will be bringing to your information will be for providing the services to you for which you have subscribed to us.
3. Your information given to us represents your identity with us. If any changes are brought in any of the fields of which you have provided us the information, you shall bring it to our notice by either calling us or dropping a mail to us.
4. In addition to the service provided to you, your information (mobile number, E-mail ID etc.) can be brought in use for sending you newsletters, surveys, contest information, or information about any new services of the company which will be for your benefit and while subscribing for our services, you agree that Trifid Research has the right to do so.
5. By subscribing to our services, you consent to our Privacy Policy and Terms of Use.
6. Trifid research does not guarantee or is responsible in any which way, for the trade execution of our recommendations, this is the sole responsibility of the client.
7. Due to the market's volatile nature, the trader may/ may not get appropriate opportunity to execute the trades at the mentioned prices and Trifid Research hold's no liability for any profit/ loss incurred whatsoever in this case.
8. It is the responsibility of the client to view the report timely from our Premium member section on our website: [www.trifidresearch.com](http://www.trifidresearch.com) and the same will also be mailed to this registered email id.
9. Trifid research does not hold any liability or responsibility of delay in mail delivery of reports, as this depends on our mail service provider's network infrastructure.
10. The clients can call us for any query related to buying/selling the securities, based on our recommendations.