

Key benchmark indices suffered strong losses in volatile trade led by slide in index pivotals HDFC, Reliance Industries and HDFC Bank. Trading was volatile as traders rolled over positions in the F&O segment from the near month October 2018 series to November 2018 series. The October 2018 F&O contracts expired today, 25 October 2018. The Sensex settled below the psychological 34,000 level and The Nifty 50 lost 99.85 points and settled at 10124.90. IT sector were the major gainers and Media sector were the major losers of the day.

Global Markets

Tesla Inc the electric carmaker's new Model 3 will be available in Australia and the UK around the middle of next year. European shares sank on Thursday as a heavy selloff in U.S. and Asian markets spread to the region and weak results from AB InBev and WPP among others underlined investors' anxieties about slowing earnings growth in an uncertain political landscape. The pan-European STOXX 600 fell as much as 1%.

INDEX	ADVANCE	DECLINE	UNCHANGED
NSE	603	1118	340
INDEX	ADVANCE	DECLINE	UNCHANGED
BSE	937	1569	131

Gainers

LARGECAP	%CHANGE	MIDCAP	%CHANGE
WIPRO	+3.03%	BATAINDIA	+4.84%
COALINDIA	+2.27%	GRUH	+4.55%
HCLTECH	+2.27%	AMARAJABAT	+4.12%
IOC	+1.53%	NBCC	+3.00%
KOTAKBANK	+1.05%	CASTROLIND	+2.16%

Losers

LARGECAP	%CHANGE	MIDCAP	%CHANGE
BHARTIARTL	-3.28%	DISHTV	-17.61%
IBULHSGFIN	-5.63%	JUBLFOOD	-10.00%
UPL	-3.89%	DBL	-5.90%
VEDL	-3.47%	HEXAWARE	-5.50%
HINDALCO	-3.05%	MPHASIS	-4.98%

Nifty



Indian Markets

INDEX	VALUE	CHANGE	%CHANGE
SENSEX	33690.09	-343.87	-1.01%
NIFTY	10124.90	-99.85	-0.98%
NIFTYBANK	24817.45	-246.75	-0.98%
INDIA VIX	19.3100	+0.43	+2.27%

International Markets

INDEX	VALUE	CHANGE	%CHANGE
DOW	24583.42	-608.01	-2.41%
NASDAQ	7108.40	-329.14	-4.63%
FTSE	6976.86	+13.88	+0.20%
SHANGHAI	2603.80	+0.50	+0.02%
NIKKEI	21268.73	-822.45	-3.87%

OUR PREVIOUS CALLS UPDATE

Intraday super stars

Date	Stocks	Entry	Exit	P/L
25/10	INFY(S)	643.85	637.40	+2003
25/10	YESBANK(S)	202	200	+1980

Multibagger

Date	Stock	Entry	Exit	P/L
25/10	HINDUNILVR(L)	1587.3	1582.3	-3000

Trifid special

Date	Stock	Entry	Exit	P/L
25/10	M&MFIN(L)	404.55	412.65	+6006

[For our next calls click here.....](#)

Stock Snippets

Tata Chemicals signed MOU with CSIR-Central Electrochemical Research Institute, Karaikudi to scale up production of cathode materials for Lithium-ion cells.

L&T Finance reports that it has Rs1,800cr exposure to IL&FS Infra projects and about Rs800cr exposure to projects of Supertech.

NBCC (India) has received letter of appointment from Ministry of Health & Family Welfare, Govt. of India for Planning, Designing, & Construction of All India Institute of Medical Sciences (AIIMS), Deoghar, Jharkhand under Pradhan Mantri Swasthya Suraksha Yojana (PMSSY) amounting Rs. 902 crore (approx).

KPIT Tech to be tech partner for BMW's autonomous driving project.

Dynemic Products halted operations at Ankleshwar Plant after receiving notice from the Gujarat Pollution Control Board.

Schaeffler India completed merger of INA Bearings India Pvt. Ltd. and LuK India Pvt. Ltd.

Global Markets

Japan stocks were lower after the close on Thursday, as losses in the Precision Instruments, Pharmaceutical Industry and Electrical/Machinery sectors led shares lower. The Nikkei 225 lost 3.86% to hit a new 6-months low.

China stocks were mixed after the close on Thursday, as gains in the Real Estate Investments & Services, Oil Equipment Services & Distribution and Financials sectors led shares higher while losses in the Software & Computer Services, Gas, Water & Multiutilities and Technology sectors led shares lower.

Taiwan stocks were lower after the close on Thursday, as losses in the, Electricity and Biotech & Medical Care sectors led shares lower. The Taiwan Weighted fell 2.44% to hit a new 52-week low.

DATE: 25/10/18

FII/DII	CASH	MTD	YTD
FII	-1495.71	-23855.08	-73946.24
DII	+339.60	+18144.12	+99314.67

Sectoral gainers and losers

SECTOR	%CHANGE IN MARKETCAP	ADV	DEC
Automotive	-	-	-
Banking & Financial Services	-	-	-
Cement & Construction	-	-	-
Chemicals	-	-	-
Conglomerates	-	-	-
Consumer Durables	-	-	-
Consumer Non-durables	-	-	-
Engineering & Capital Goods	-	-	-
Food & Beverages	-	-	-
Information Technology	-	-	-
Manufacturing	-	-	-
Media & Entertainment	-	-	-
Metals & Mining	-	-	-
Miscellaneous	-	-	-
Oil & Gas	-	-	-
Pharmaceuticals	-	-	-
Retail & Real Estate	-	-	-
Services	-	-	-
Telecommunication	-	-	-
Tobacco	-	-	-
Utilities	-	-	-

Stocks breakout on moving average

STOCKS	PRICE	30DMA
CASTROLIND	146.90	146.21
MCDOWELL	535.50	528.19
INDHOTEL	127.45	126.17
AMARAJABAT	772.30	759.47



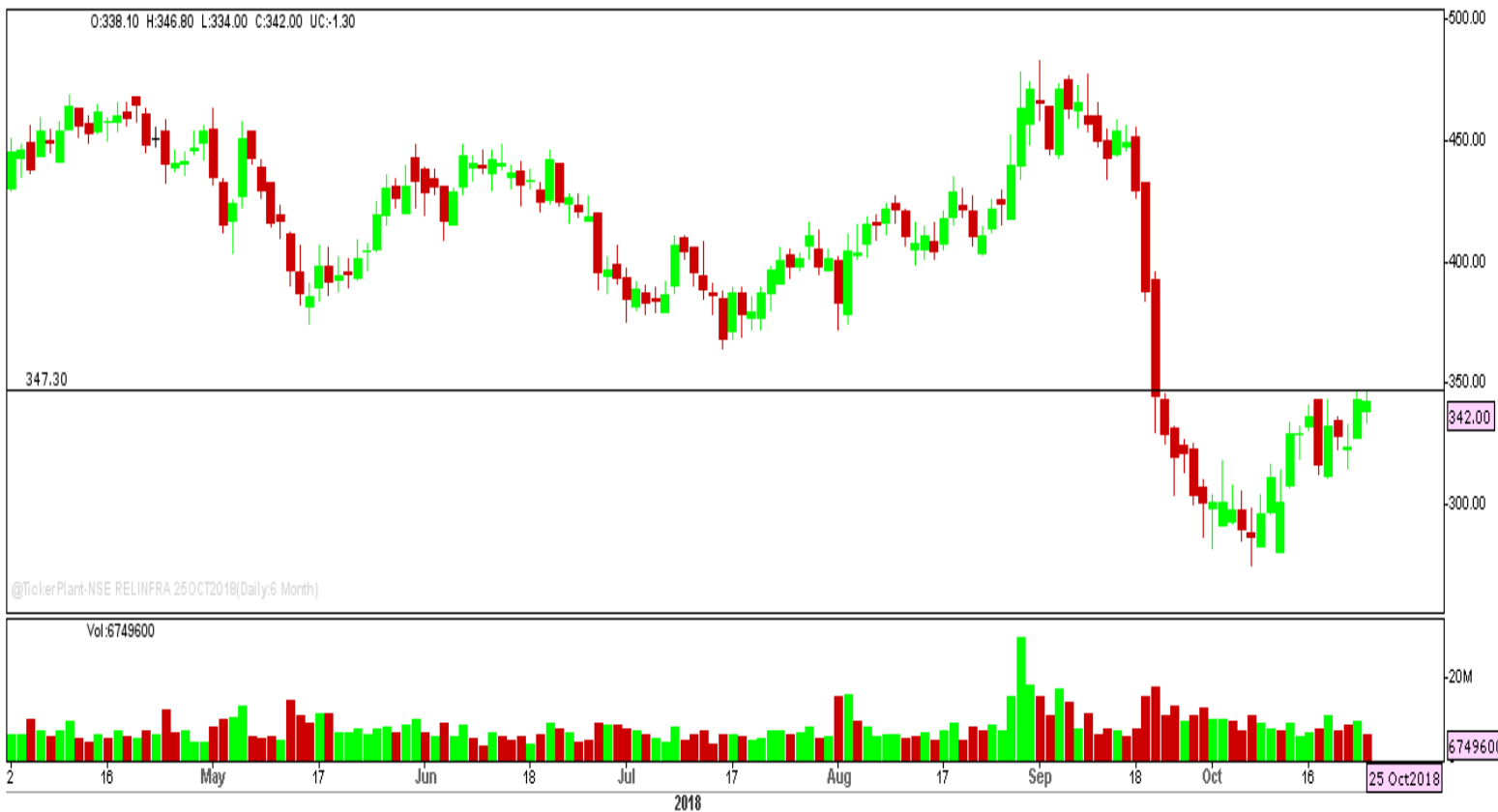
VOLTAS EQ is being forming bullish consolidation and settled near to the immediate resistance as shown in the chart. The stock may give breakout and trade higher ahead.

BUY ABOVE 531 TARGETS 536.30/541.60/546.95 SL 525.70



AUROPHARMA EQ is being trading lower from last couple of trading sessions with sustainable sell side volume. The stock may fall further below the drawn support.

SELL BELOW 717.30 TARGETS 710.15/702.95/695.75 SL 724.45



RELINFRA FUT showed bullishness on chart forming double top and settled bullishly biased. The stock may give breakout and trade higher.

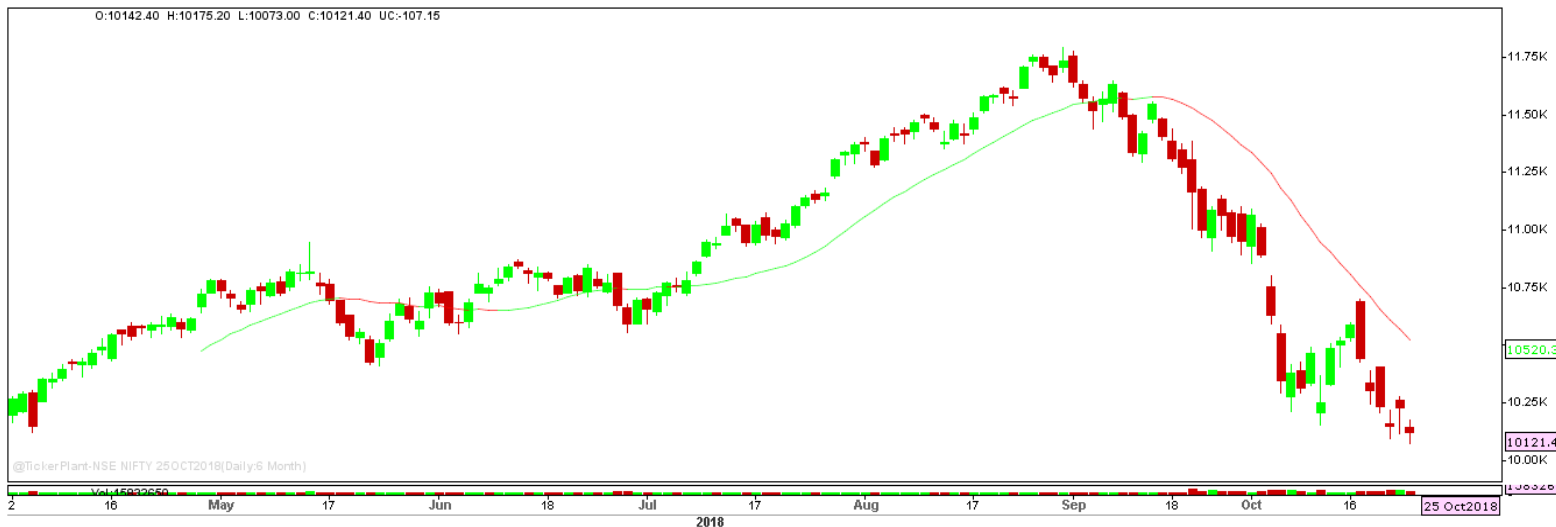
BUY ABOVE 347.30 TARGETS 349.60/351.95 SL 345



JSWSTEEL EQ formed bullish engulfing candle on daily chart with increased buy side volume. The stock may give breakout and trade higher.

BUY ABOVE 355.85 TARGETS 363 SL 348.75

Nifty Technical's



Nifty tanked on the expiry trade session of October F&O series and settled lower at 10121.40. The next key support and resistance for the market is at 10000 and 10350.

Bank Nifty Technical's



Nifty bank too slipped settling the expiry at 24802.05, losing more than one percent. The next key support and resistance for the banking index is at 24650 and 25350.

Index	24-Oct-18	25-Oct-18	Change in OI	% Change
NIFTY	9104925	7021275	-2083650	-22.28%

SCRIPS IN F&O BAN FOR TRADE

NIL

Stocks at 52 Week High

Stocks	New 52 W/H	Previous High
KSB	818.90	799
-	-	-
-	-	-
-	-	-
-	-	-

Stocks Approaching 52 Week High

Stocks	LTP	52W High
ATUL	3200	3415
WIPRO	318.15	338
GILLETTE	6583.55	7100
OMAXE	213.20	235.45
-	-	-

Stocks rising continuously 2-3 days

Stocks	LTP
BARTRONICS	7.55
NBCC	54.85
STRTECH	326.35
RADICO	355.85

Stocks at 52 Week Low

Stocks	New 52 W/L	Previous Low
8KMILES	88.40	93.05
BSE	596	605.05
CRISIL	1341.20	1347
GHCL	189	192.10
GRASIM	779	797

Stocks Approaching 52 Week Low

Stocks	LTP	52W Low
BEML	542	534.05
TATACOMM	445	440
RANEENGINE	516	511.40
JKLAKSHMI	265	242.05
-	-	-

Stocks falling continuously 2-3 days

Stocks	LTP
TATAMOTORS	165.35
CCL	225.95
FCONSUMER	41.15
PTL	41.80

Event Calendar(22ndOCTOBER2018 to 27thOCTOBER2018)

22/10/18 (Mon)	23/10/18 (Tues)	24/10/18 (Wed)	25/1/18 (Thur)	26/10/18 (Fri)	27/10/18 (Sat)
RESULTS	RESULTS	RESULT	RESULTS	RESULT	RESULT
CCL, JUBLIANT, MAHSCOOTER	MCX, HCLTECH BAJAJFINSERV, RBL BANK, AMBUJACEMTN, ICICI PRUDENTIAL	WIPRO, BAJAJ- AUTO, IDFC BANK, RADICO, INFRATEL, ECO DATA M3 MONEY SUPPLY DATA	PRAJIND, SHALBY, BHARTIARTL, L&T TECHNOLOGY, HIL	ICICIBANK, ATUL UPL, SUBROS ECO DTA BANK LOAN GROWTH, DEPOSIT GROWTH,FX RESERVE	HT MEDIA

DISCLAIMER

Trifid Research respects and values the Right to Privacy of each and every individual. We are esteemed by the relationship and by becoming our clients; you have a promise from our side that we shall remain loyal to all our clients and non-clients whose information resides with us. This Privacy Policy of Trifid Research applies to the current clients as well as former clients. Below are the word by word credentials of our Privacy Policy:

1. Your information, whether public or private, will not be sold, rented, exchanged, transferred or given to any company or individual for any reason without your consent.
2. The only use we will be bringing to your information will be for providing the services to you for which you have subscribed to us.
3. Your information given to us represents your identity with us. If any changes are brought in any of the fields of which you have provided us the information, you shall bring it to our notice by either calling us or dropping a mail to us.
4. In addition to the service provided to you, your information (mobile number, E-mail ID etc.) can be brought in use for sending you newsletters, surveys, contest information, or information about any new services of the company which will be for your benefit and while subscribing for our services, you agree that Trifid Research has the right to do so.
5. By subscribing to our services, you consent to our Privacy Policy and Terms of Use.
6. Trifid research does not guarantee or is responsible in any which way, for the trade execution of our recommendations, this is the sole responsibility of the client.
7. Due to the market's volatile nature, the trader may/ may not get appropriate opportunity to execute the trades at the mentioned prices and Trifid Research hold's no liability for any profit/ loss incurred whatsoever in this case.
8. It is the responsibility of the client to view the report timely from our Premium member section on our website: www.trifidresearch.com and the same will also be mailed to this registered email id.
9. Trifid research does not hold any liability or responsibility of delay in mail delivery of reports, as this depends on our mail service provider's network infrastructure.
10. The clients can call us for any query related to buying/selling the securities, based on our recommendations.