

The market climbed on Friday in line with global stocks as crude prices fell and the rupee extended gains to touch a one-month high. Global shares rose on hopes of a trade agreement between China and the United States. The Sensex ended above the psychologically important 35,000 mark after moving above and below that level in intraday trade. Weakness in IT shares capped gains. The Nifty 50 gained 172.55 points and settled the day at 10553.00. Auto sector were the major gainer and IT sector were the major loser of the day.

Global Markets

U.S. stocks were lower after the close on Friday, as losses in the Technology, Healthcare and Utilities sectors led shares lower. The Dow Jones Industrial Average lost 0.43%, while the S&P 500 index lost 0.63%, and the NASDAQ Composite index fell 1.04%. Uber Technologies Inc has asked Pennsylvania for permission to resume self-driving car testing on public roads and has improved the autonomous vehicle software.

INDEX	ADVANCE	DECLINE	UNCHANGED
NSE	1163	648	94
INDEX	ADVANCE	DECLINE	UNCHANGED
BSE	1612	1061	135

Gainers

LARGECAP	%CHANGE	MIDCAP	%CHANGE
VEDL	+6.67%	PCJEWELLER	+27.09%
MARUTI	+6.31%	AMARAJABAT	+5.94%
BPCL	+6.19%	JINDALSTEL	+5.51%
TATMOTORS	+5.82%	BHARATFIN	+4.64%
ADANI PORTS	+5.18%	BHARATFORG	+4.51%

Losers

LARGECAP	%CHANGE	MIDCAP	%CHANGE
TECHM	-3.98%	PNB	-4.86%
WIPRO	-3.37%	VAKRANGEE	-4.86%
DRREDDY	-1.74%	CANBK	-3.30%
CIPLA	-1.42%	HEG	-3.03%
ZEEL	-1.31%	HEXAWARE	-2.84%

Nifty



Indian Markets

INDEX	VALUE	CHANGE	%CHANGE
SENSEX	35011.65	+579.68	+1.68%
NIFTY	10553.00	+172.55	+1.66%
NIFTYBANK	25701.65	+378	+1.49%
INDIA VIX	18.2300	-0.96	-5.01%

International Markets

INDEX	VALUE	CHANGE	%CHANGE
DOW	25270.83	-109.91	-0.43%
NASDAQ	7356.99	-77.07	-1.05%
FTSE	7094.12	-20.54	-0.29%
SHANGHAI	2676.48	+70.24	+2.62%
NIKKEI	22243.66	+556.01	+2.50%

OUR PREVIOUS CALLS UPDATE

Intraday super stars

Date	Stocks	Entry	Exit	P/L
02/11	SUNTV(L)	675.40	682.15	+1998
02/11	L&TFH(L)	137.15	135.80	-1968

Multibagger

Date	Stock	Entry	Exit	P/L
02/11	HEROMOTOCO(L)	2815	2845	+6000

Trifid special

Date	Stock	Entry	Exit	P/L
02/11	BEM(L)	639.20	652	+6007

[For our next calls click here.....](#)

Stock Snippets

HPCL will shut its crude unit in Mumbai refinery in January-March 2019 for 10 days.

Supreme Court has suggested that **Indraprastha Gas** takeover the natural gas supply in Gurugram from Haryana City Gas Distribution Ltd.

Network18 Media & Investment has received an approval from National Company Law Tribunal (NCLT), Mumbai Bench for its scheme of merger by absorption

Reliance Industries and its four arms announced an open offer to acquire 2.88cr shares, representing 25.64% of GTPL Hathway at Rs82.65/share aggregating to Rs238.4cr.

The Board of **T.V. Today Network** has approved the launch of new Current Affairs & News Channel in the name and style of 'Aaj Tak HD'.

Inox Leisure approved the preferential issue of maximum of 64 lakh equity shares to its promoter, Gujarat Fluorochemicals at Rs241.71/share.

Global Markets

Spain stocks were higher after the close on Friday, as gains in the Financial Services & Real Estate, Building & Construction and Telecoms & IT sectors led shares higher. The IBEX 35 gained 0.47%.

France stocks were mixed after the close on Friday, as gains in the Consumer Services, Technology and Healthcare sectors led shares higher while losses in the Oil & Gas, Industrials and Basic Materials sectors led shares lower.

Italy stocks were higher after the close on Friday, as gains in the Travel & Leisure, Financials and Industrials sectors led shares higher. The Investing.com Italy 40 added 1.14%

DATE: 02/11/18

FII/DII	CASH	MTD	YTD
FII	-196.90	+151.85	-79122.46
DII	+852.99	-343.82	+106531.24

Sectoral gainers and losers

SECTOR	%CHANGE IN MARKETCAP	ADV	DEC
Automotive	3.81%	63	16
Retail & Real Estate	2.96%	37	14
Cement & Construction	2.72%	60	30
Oil & Gas	2.21%	17	4
Tobacco	2.12%	4	0
Metals & Mining	2.02%	58	22
Engineering & Capital Goods	1.89%	93	33
Chemicals	1.88%	71	35
Consumer Non-durables	1.76%	16	14
Miscellaneous	1.59%	101	53
Telecommunication	1.53%	12	17
Banking & Financial Services	1.31%	129	58
Services	1.15%	49	29
Manufacturing	1.00%	122	76
Food & Beverages	0.81%	54	22
Conglomerates	0.67%	17	11
Utilities	0.42%	19	7
Consumer Durables	0.17%	4	7
Pharmaceuticals	-0.40%	47	35
Media & Entertainment	-0.62%	26	21
Information Technology	-1.40%	46	54

Stocks breakout on moving average

STOCKS	PRICE	30DMA
GNFC	380.80	343.52
AMARAJABAT	790.80	750.55
BHARATFORG	607.25	584.06
HINDALCO	240.45	232.04



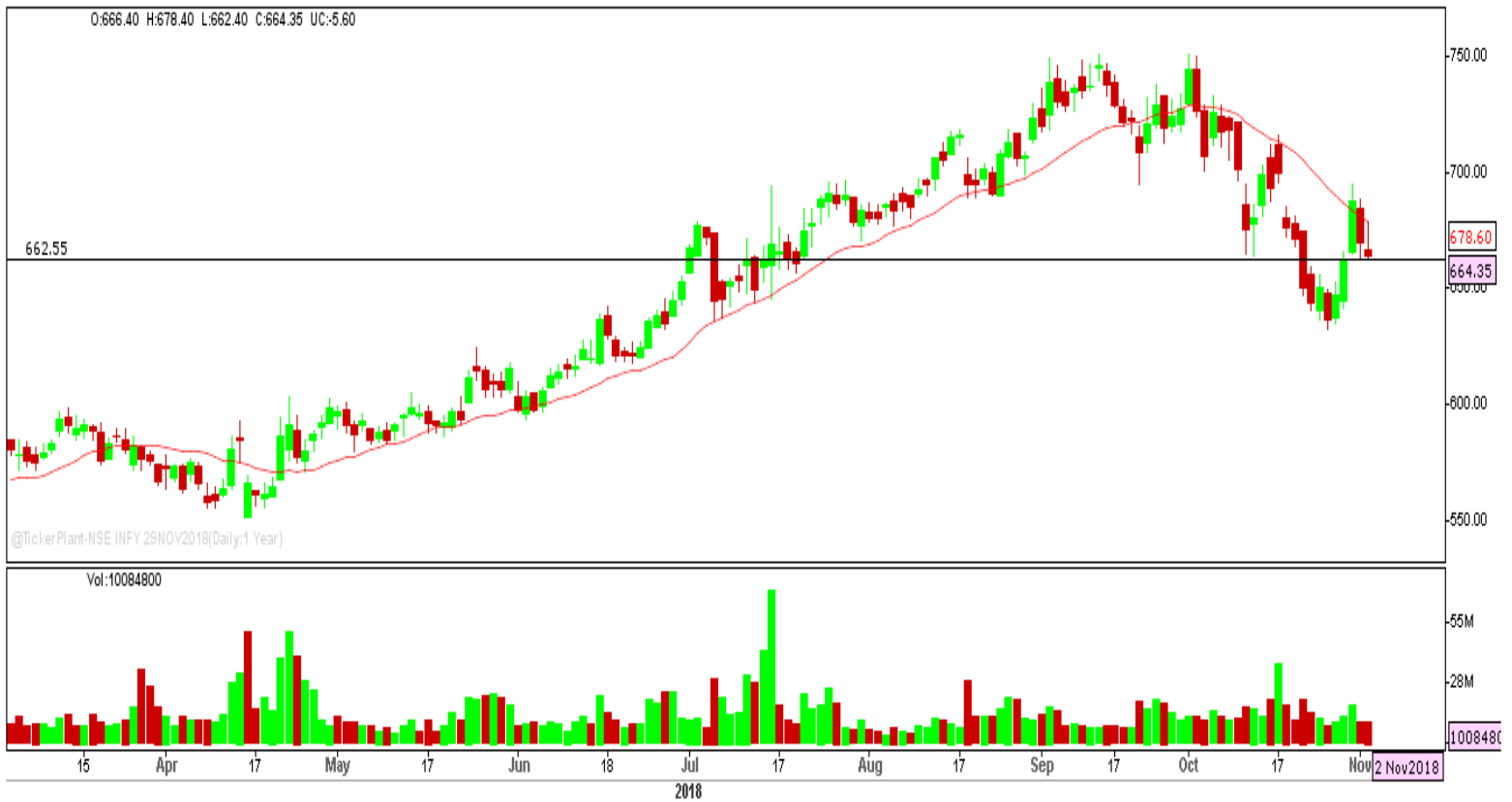
HEXAWARE EQ is being trading lower and settled near the support level. The stock may continue to trade lower below the drawn support.

SELL BELOW 308.30 TARGETS 305.20/302.10/299.05 SL 311.40



ARVIND EQ formed bearish engulfing candle on daily chart and settled bearishly biased. The stock may break the support so drawn and fall further.

SELL BELOW 323.50 TARGETS 320.25/317/313.80 SL 326.75



INFY FUT took the resistance of 20 DMA and settled forming bearish hammer candle on daily chart. The stock fut may give lower breakout.

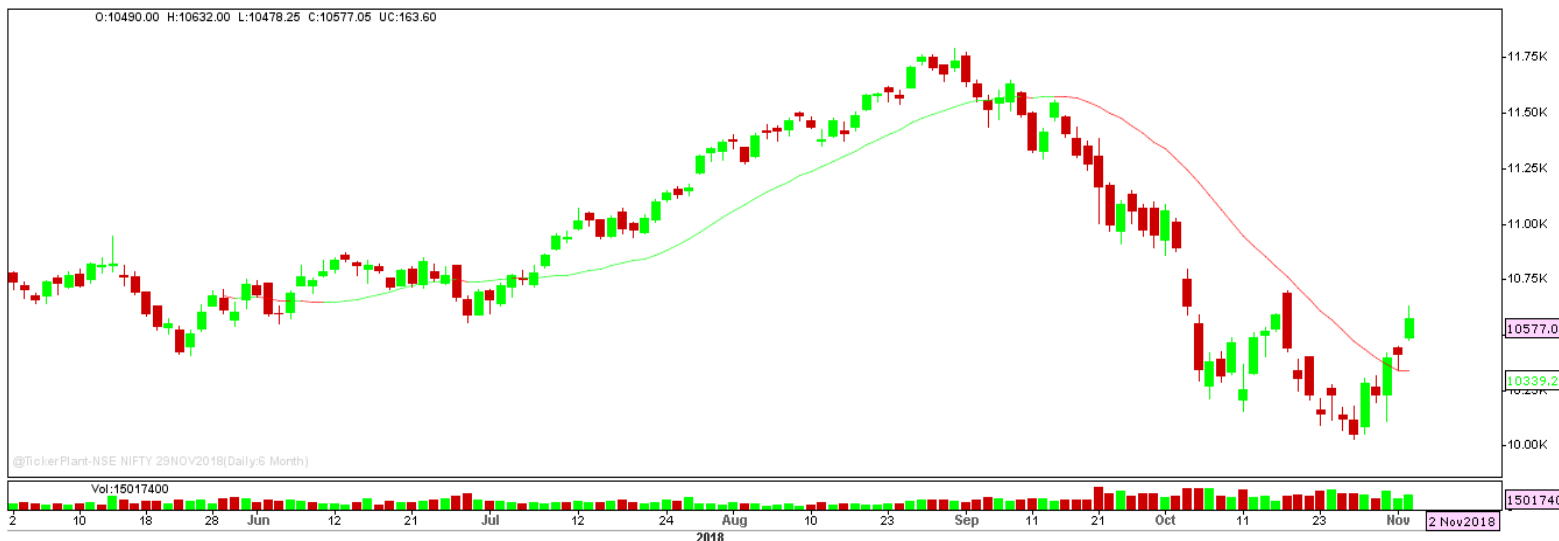
SELL BELOW 662.50 TARGETS 660/657.50 SL 665



TATAMTRDVR EQ depicts the buying action and settled above the 20 DMA to close near to the immediate resistance level. The stock is expected to give breakout above the drawn resistance level.

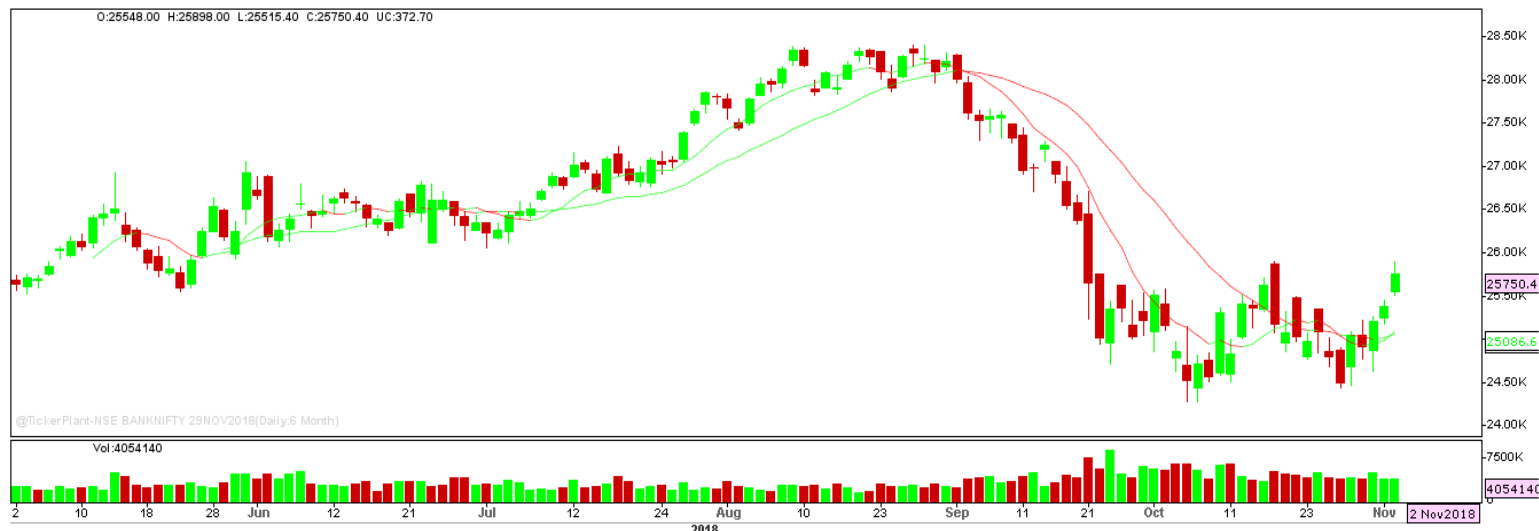
BUY ABOVE 103.50 TARGETS 105.60 SL 101.45

Nifty Technical's



Nifty traded higher on the last trading session of the week to close at 10577.05. The next key support and resistance for the market is at 10475 and 10700.

Bank Nifty Technical's



Nifty bank too traded higher in line with nifty 50 and settled at 25750.40. The next key support and resistance for the banking index is at 25500 and 26000.

Index	01-Nov-18	02-Nov-18	Change in OI	% Change
NIFTY	23005650	23595900	+590250	+2.57%

SCRIPS IN F&O BAN FOR TRADE

NIL.

Stocks at 52 Week High

Stocks	New 52 W/H	Previous High
ADANIPOWER	52.70	51.90
ATUL	3478.20	3415
DIVISLAB	1523.95	1516.95
TIIL	642	630
USHAMART	39.20	37.25

Stocks Approaching 52 Week High

Stocks	LTP	52W High
ATUL	3369.70	3415
WIPRO	329.65	338
ICICIBANK	353.70	365.70
DRREDDY	2461.60	2670.80
AUOPHARMA	792.55	827.45

Stocks rising continuously 2-3 days

Stocks	LTP
VEDL	255.90
MARUTI	7135.45
BPCL	302.35
HINDPETRO	240.20

Stocks at 52 Week Low

Stocks	New 52 W/L	Previous Low
8KMILES	55.40	61.50
AIFL	75.55	79.50
BRNL	99.05	99.50
GDL	131	131.75
NEULANLAB	528.05	549.10

Stocks Approaching 52 Week Low

Stocks	LTP	52W Low
ICICIBANK	354.45	365.70
WIPRO	318.40	338
GAIL	369.75	399.40
AARTIIND	1383.05	1445
-	-	-

Stocks falling continuously 2-3 days

Stocks	LTP
TECHM	690.90
WIPRO	318.40
DRREEDY	2423.25
CIPLA	607.10

Event Calendar(05thNOVEMBER2018 to 10thNOVEMBER2018)

05/11/18 (Mon)	06/11/18 (Tues)	07/11/18 (Wed)	08/11/18 (Thur)	09/11/18 (Fri)	10/11/18 (Sat)
RESULTS	RESULTS	MUHRAT	RESULTS	RESULT	RESULT
APL APOLLOW, INOX WIND, ORIENT CEMENT, EVEREADY IND ECO DATA NIKKEI SERVICES PMI	SANGHI IND, VOLTAS, AB CAPITAL, GRAPHITE INDIA	TRADING @ 5 PM TO 6:30 PM	MRF	SHOBHA, INDIA CEMENT, INDIAN BANK ECO DATA FX RESERVE	AVANTI FEEDS, WOCKPHARMA, ITI, NALCO

DISCLAIMER

Trifid Research respects and values the Right to Privacy of each and every individual. We are esteemed by the relationship and by becoming our clients; you have a promise from our side that we shall remain loyal to all our clients and non-clients whose information resides with us. This Privacy Policy of Trifid Research applies to the current clients as well as former clients. Below are the word by word credentials of our Privacy Policy:

1. Your information, whether public or private, will not be sold, rented, exchanged, transferred or given to any company or individual for any reason without your consent.
2. The only use we will be bringing to your information will be for providing the services to you for which you have subscribed to us.
3. Your information given to us represents your identity with us. If any changes are brought in any of the fields of which you have provided us the information, you shall bring it to our notice by either calling us or dropping a mail to us.
4. In addition to the service provided to you, your information (mobile number, E-mail ID etc.) can be brought in use for sending you newsletters, surveys, contest information, or information about any new services of the company which will be for your benefit and while subscribing for our services, you agree that Trifid Research has the right to do so.
5. By subscribing to our services, you consent to our Privacy Policy and Terms of Use.
6. Trifid research does not guarantee or is responsible in any which way, for the trade execution of our recommendations, this is the sole responsibility of the client.
7. Due to the market's volatile nature, the trader may/ may not get appropriate opportunity to execute the trades at the mentioned prices and Trifid Research hold's no liability for any profit/ loss incurred whatsoever in this case.
8. It is the responsibility of the client to view the report timely from our Premium member section on our website: www.trifidresearch.com and the same will also be mailed to this registered email id.
9. Trifid research does not hold any liability or responsibility of delay in mail delivery of reports, as this depends on our mail service provider's network infrastructure.
10. The clients can call us for any query related to buying/selling the securities, based on our recommendations.