

Amid a divergent trend among various index constituents, the key benchmark indices provisionally settled with small gains. Domestic stocks saw a positive opening led by buying demand in index pivotals. Stocks gyrated in a small range with positive bias in early afternoon trade. Indices firmed up in afternoon trade. Key indices dipped in negative zone in mid-afternoon trade. The Nifty 50 gained 6 points and settled the day at 10530. Media sector were the major gainer and PSU Banks were the major loser of the day.

Global Markets

European shares dipped on Tuesday as investors punished companies like Zalando and Pandora that missed expectations, while caution prevailed ahead of U.S. mid-term elections. The European STOXX 600 dipped 0.1% while the euro zone's leading index fell 0.3%. BHP Billiton Ltd. expects to take about a week to recover from the derailment of one of its iron ore trains in Australia that damaged about 1.5 kilometers of track.

INDEX	ADVANCE	DECLINE	UNCHANGED
NSE	856	856	345
INDEX	ADVANCE	DECLINE	UNCHANGED
BSE	1280	1277	155

Gainers

LARGECAP	%CHANGE	MIDCAP	%CHANGE
ZEEL	+2.25%	AVANTIFEED	+5.84%
TCS	+2.21%	VAKRANGEE	+4.89%
YESBANK	+2.07%	GLENMARK	+4.20%
TATAMOTORS	+1.82%	TORNTPHARM	+4.18%
SUNPHARMA	+1.36%	DHFL	+3.47%

Losers

LARGECAP	%CHANGE	MIDCAP	%CHANGE
VEDL	-6.77%	PCJEWELLER	-11.90%
CIPLA	-5.73%	BALKRISIND	-11.69%
HINDPETRO	-2.96%	IGL	-4.01%
SBIN	-2.88%	MFSL	-4.00%
AXISBANK	-2.71%	MPHASIS	-3.36%

Nifty



Indian Markets

INDEX	VALUE	CHANGE	%CHANGE
SENSEX	34991.91	+40.99	+0.12%
NIFTY	10530.00	+6.00	+0.06%
NIFTYBANK	25598.00	-134.20	-0.52%
INDIA VIX	18.3925	-1.09	-5.59%

International Markets

INDEX	VALUE	CHANGE	%CHANGE
DOW	25461.70	+190.87	+0.76%
NASDAQ	7328.85	-28.14	-0.38%
FTSE	7078.35	-25.49	-0.36%
SHANGHAI	2659.36	-6.07	-0.23%
NIKKEI	22147.75	+248.76	+1.12%

OUR PREVIOUS CALLS UPDATE

Intraday super stars

Date	Stocks	Entry	Exit	P/L
06/11	PETRONET(S)	216.50	214.35	+1986
06/11	RELIANCE(L)	1093	1104.80	+2002

Multibagger

Date	Stock	Entry	Exit	P/L
06/11	HINDUNILVR(L)	1650	-	UNEXE

Trifid special

Date	Stock	Entry	Exit	P/L
06/11	TATAMTRDVR(L)	103.50	105.60	+6086

[For our next calls click here.....](#)

Stock Snippets

HCL Tech ties up with Deutsche Bank for providing the latter with a digital cheque processing platform.

Indo Count Industries said that workers at its spinning unit in Maharashtra had resorted to illegal strike from November 4 due to higher demand of bonus.

Bank of Baroda increased its MCLR by 10 basis points across various tenors with effect from November 7. Overnight MCLR was at 8.15% and one year MCLR at 8.65%.

Minda Industries board approved investment setting up of manufacturing plant of controller and telematics for two-wheelers and four wheelers in Maharashtra for supplies to OEMs. The total investment for this project is pegged at Rs76.52cr.

Wipro announced a new partnership with Check Point Software Technologies, a leading provider of cyber security solutions globally, to deliver Check Point's advanced and dynamic cloud security solution, CloudGuard IaaS.

Global Markets

Indonesia stocks were higher after the close on Tuesday, as gains in the Mining, Property and Financials sectors led shares higher. The IDX Composite Index added 0.06% to hit a new 1-month high.

Japan stocks were higher after the close on Tuesday, as gains in the Pharmaceutical Industry, Insurance and Gas & Water sectors led shares higher. The Nikkei 225 gained 1.05%.

Taiwan stocks were lower after the close on Tuesday, as losses in the, Other Electronic and Electronic Parts/Components sectors led shares lower. The Taiwan Weighted fell 0.66%.

DATE: 06/11/18

FII/DII	CASH	MTD	YTD
FII	-499.71	-335.52	-79609.83
DII	+118.69	-847.07	+106027.99

Sectoral gainers and losers

SECTOR	%CHANGE IN MARKETCAP	ADV	DEC
Information Technology	1.11%	58	44
Telecommunication	0.82%	16	9
Media & Entertainment	0.62%	22	17
Consumer Durables	0.37%	6	4
Utilities	0.37%	13	9
Oil & Gas	0.36%	12	10
Pharmaceuticals	-0.06%	42	39
Engineering & Capital Goods	-0.22%	66	61
Cement & Construction	-0.23%	44	43
Manufacturing	-0.33%	100	92
Banking & Financial Services	-0.36%	95	93
Conglomerates	-0.42%	16	15
Retail & Real Estate Services	-0.44%	22	26
Automotive	-0.46%	37	41
Food & Beverages	-0.47%	37	43
Chemicals	-0.59%	36	42
Consumer Non-durables	-0.61%	45	60
Metals & Mining	-0.70%	11	17
Miscellaneous	-0.75%	35	49
Tobacco	-0.79%	68	83
	-0.82%	2	3

Stocks breakout on moving average

STOCKS	PRICE	30DMA
AUTOAXLES	1264.65	1182.79
HERITGFOOD	529.70	499.86
WALCHANNAG	105.35	99.62
POWERMECH	912.25	864.92



CADILAHC EQ took the resistance of downward slopping trend line and settled bearishly biased. The stock may fall further below the drawn support level.

SELL BELOW 347 TARGETS 343.55/340.05/336.60 SL 350.45



TATAELXSI EQ tested the support and closed bearishly biased, taking the resistnace of trend line so drawn.The stock may give lower breakout.

SELL BELOW 1040.30 TARGETS 1029.90/1019.50/1009.10 SL 1050.70



BAJFINANCE FUT is being trading lower from last couple of trading sessions and rested near the immediate support level. The stock fut may break the support so drawn.

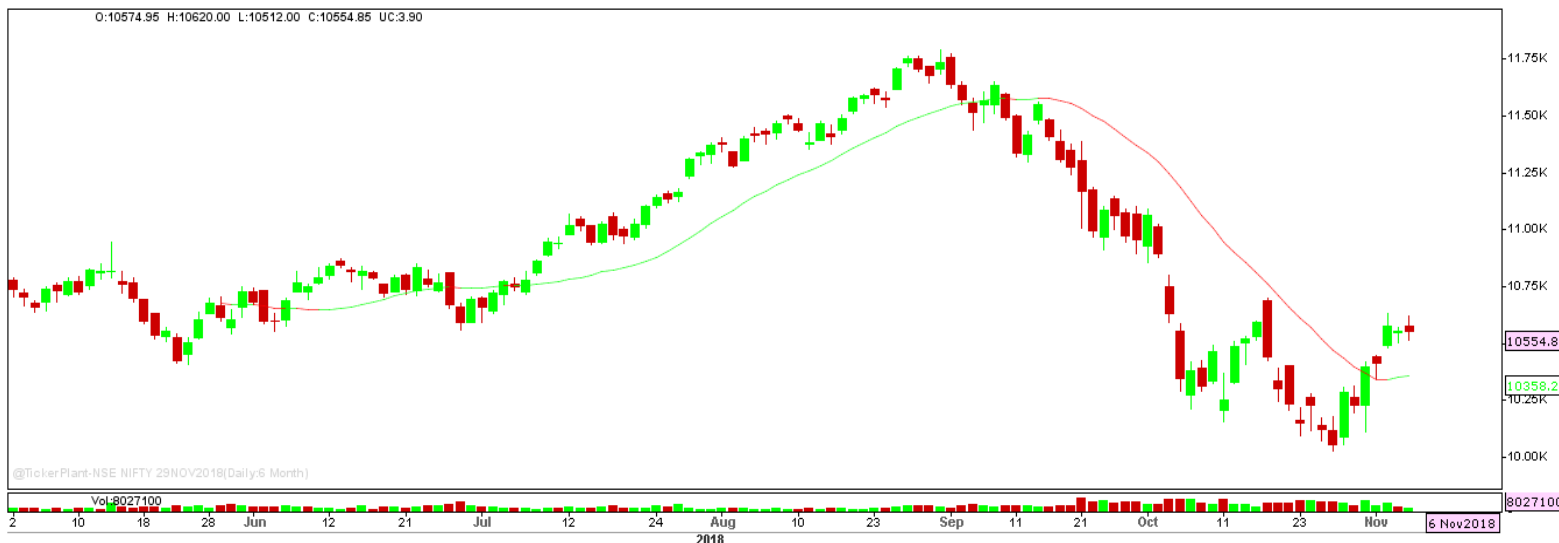
SELL BELOW 2341 TARGETS 2329/2317 SL 2353



RELIANCE EQ formed double top formation on daily chart and closed bullish biased. The stock may give breakout and trade higher.

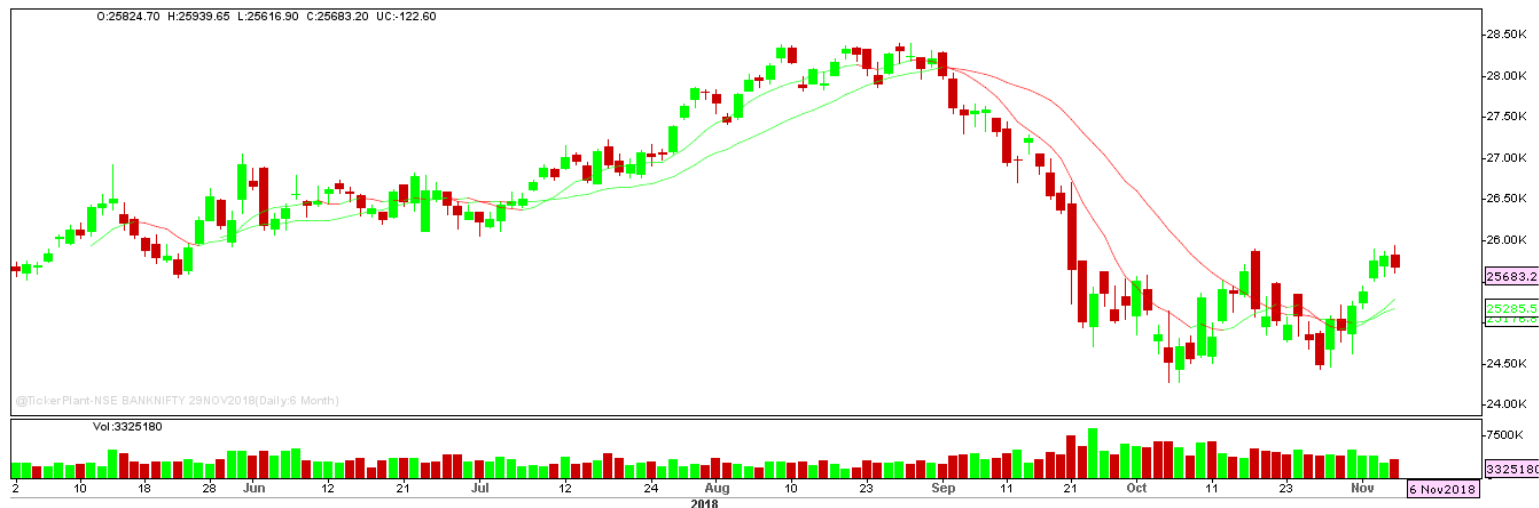
BUY ABOVE 1115 TARGETS 1137.30 SL 1092.70

Nifty Technical's



Nifty traded flat and settled with marginal gains to close at 10554.85. The next key support and resistance for the market is at 10450 and 10640.

Bank Nifty Technical's



Nifty bank also traded flat and loses ground in last leg of trading session to close lower at 25683.20. The next key support and resistance for the banking index is at 25500 and 26000.

Index	05-Nov-18	06-Nov-18	Change in OI	% Change
NIFTY	23758050	23609550	-148500	-0.63%

SCRIPS IN F&O BAN FOR TRADE

NIL.

Stocks at 52 Week High

Stocks	New 52 W/H	Previous High
ADANIGAS	79.35	75.60
BIRLACABLE	187.30	181.10
IOLCP	154.60	152.20
KILITCH	206.00	199.90
UNIVCABLES	333.95	312.80

Stocks Approaching 52 Week High

Stocks	LTP	52W High
DIVISLAB	1477.80	1523.95
ATUL	3363.10	3478.20
ICICIBANK	353.10	365.70
AARTIIND	1394.10	1445.00
WIPRO	324.90	338.00

Stocks rising continuously 2-3 days

Stocks	LTP
YESBANK	214.45
SUNPHARMA	579.35
RELIANCE	1104.10
NHPC	24.65

Stocks at 52 Week Low

Stocks	New 52 W/L	Previous Low
BASF	1567.95	1582.20
EVEREADY	175.00	175.75
FAIRCHEM	319.55	326.50
HINDZINC	259.75	260.65
HONDAPOWER	1027.05	1040.00

Stocks Approaching 52 Week Low

Stocks	LTP	52W Low
SPARC	289.45	286.00
HEXAWARE	312.00	308.30
JKLAKSHMI	265.20	261.95
ACCELYA	964.45	945.00
MATRIMONY	454.40	445.05

Stocks falling continuously 2-3 days

Stocks	LTP
HINDPETRO	226.30
IOC	137.35
BPCL	285.10
ADANIPORTS	325.60

Event Calendar(05thNOVEMBER2018 to 10thNOVEMBER2018)

05/11/18 (Mon)	06/11/18 (Tues)	07/11/18 (Wed)	08/11/18 (Thur)	09/11/18 (Fri)	10/11/18 (Sat)
RESULTS	RESULTS	MKT OFF ON	RESULTS	RESULT	RESULT
APL APOLLOW, INOX WIND, ORIENT CEMENT, EVEREADY IND ECO DATA NIKKEI SERVICES PMI	SANGHI IND, VOLTAS, AB CAPITAL, GRAPHITE INDIA	ACCOUNT OF DIWALI	MRF	SHOBHA, INDIA CEMENT, INDIAN BANK ECO DATA FX RESERVE	AVANTI FEEDS, WOCKPHARMA, ITI, NALCO

DISCLAIMER

Trifid Research respects and values the Right to Privacy of each and every individual. We are esteemed by the relationship and by becoming our clients; you have a promise from our side that we shall remain loyal to all our clients and non-clients whose information resides with us. This Privacy Policy of Trifid Research applies to the current clients as well as former clients. Below are the word by word credentials of our Privacy Policy:

1. Your information, whether public or private, will not be sold, rented, exchanged, transferred or given to any company or individual for any reason without your consent.
2. The only use we will be bringing to your information will be for providing the services to you for which you have subscribed to us.
3. Your information given to us represents your identity with us. If any changes are brought in any of the fields of which you have provided us the information, you shall bring it to our notice by either calling us or dropping a mail to us.
4. In addition to the service provided to you, your information (mobile number, E-mail ID etc.) can be brought in use for sending you newsletters, surveys, contest information, or information about any new services of the company which will be for your benefit and while subscribing for our services, you agree that Trifid Research has the right to do so.
5. By subscribing to our services, you consent to our Privacy Policy and Terms of Use.
6. Trifid research does not guarantee or is responsible in any which way, for the trade execution of our recommendations, this is the sole responsibility of the client.
7. Due to the market's volatile nature, the trader may/ may not get appropriate opportunity to execute the trades at the mentioned prices and Trifid Research hold's no liability for any profit/ loss incurred whatsoever in this case.
8. It is the responsibility of the client to view the report timely from our Premium member section on our website: www.trifidresearch.com and the same will also be mailed to this registered email id.
9. Trifid research does not hold any liability or responsibility of delay in mail delivery of reports, as this depends on our mail service provider's network infrastructure.
10. The clients can call us for any query related to buying/selling the securities, based on our recommendations.