

Stocks opened at par and continue to trade flat throughout the session amid weak global cues from European markets and settled with marginal loss at 11553.20. Nifty still looks bullish ahead and may continue buying above the resistance level of 11600.

Media, Metals and Auto stocks were the major gainers of the day while realty shares were the major losers for the day.

## Global Markets

European shares retreated from near six-month highs on Wednesday, European STOXX 600 index fell 0.3% as investors booked profits after five sessions of gains. BMW is expecting group pretax profit to fall by more than 10 percent in 2019 and announced a sweeping 12 billion euro (\$13.6 bln) cost savings and efficiency plan to help offset higher technology investment and currency costs.

INDEX	ADVANCE	DECLINE	UNCHANGED
NSE	667	1086	332
INDEX	ADVANCE	DECLINE	UNCHANGED
BSE	1112	1561	182

## Gainers

LARGECAP	%CHANGE	MIDCAP	%CHANGE
IBULHSGFIN	+5.09%	PNB	+3.37%
HINDALCO	+2.40%	APOLLOHOSP	+2.29%
INFY	+2.15%	PCJEWELLER	+1.99%
DRREDDY	+1.81%	RAJESHEXPO	+1.64%
LT	+1.70%	L&TFH	+1.55%

## Losers

LARGECAP	%CHANGE	MIDCAP	%CHANGE
HINDPETRO	-5.52%	JUBILANT	-8.03%
ZEEL	-5.10%	DBL	-5.28%
BPCL	-4.98%	PFC	-5.15%
NTPC	-3.67%	NBCC	-3.85%
ONGC	-2.87%	DISHTV	-2.87%

*For our BIG PROFIT calls and LATEST Reports, SUBSCRIBE to our Premium Reports. Click here.....*

## Nifty



## Indian Markets

INDEX	VALUE	CHANGE	%CHANGE
SENSEX	38386.75	+23.28	+0.06%
NIFTY	11521.05	-11.35	-0.10%
NIFTYBANK	29832.20	+64.35	+0.22%
INDIA VIX	16.0000	-0.49	-2.98%

## International Markets

INDEX	VALUE	CHANGE	%CHANGE
DOW	25887.38	-26.72	-0.10%
NASDAQ	7723.95	+9.47	+0.12%
FTSE	7314.59	-9.41	-0.13%
SHANGHAI	3090.64	-0.34	-0.01%
NIKKEI	21608.92	+42.07	+0.20%

## OUR PREVIOUS CALLS UPDATE

### Intraday super stars

Date	Stocks	Entry	Exit	P/L
20/03	VOLTAS(L)	616	-	UNEX
20/03	ZEEL(L)	469.70	-	UNEX

### Multibagger

Date	Stock	Entry	Exit	P/L
20/03	TITAN(L)	1115	-	UNEX

### Trifid special

Date	Stock	Entry	Exit	P/L
19/03	ADANI PORTS(L)	369.40	362	-6009

[For our next calls click here.....](#)

## Stock Snippets

**Vodafone Idea Ltd**, India's largest telecommunications company by subscribers, on Wednesday approved Rs 25,000 crore rights issue at a sharp discount. The deal is the second major fundraising by an Indian telco this year after Bharti Airtel Ltd announced a similar plan to reduce debt and fund operations in a market blighted by steep price competition.

**DLF** announced its second joint venture with global realty investment, development and management firm Hines. They will work on a project with total value of Rs 7,000 crore.

**Bharat Electronics Limited (BEL)**, a defence public sector, has received the first Green Channel Status certificate from Directorate General Quality Assurance (DGQA) for supply of spares for particular radar being manufactured by Military Radar Strategic Business Unit (SBU) of BEL's Bangalore Complex.

**Fortis Healthcare** has appointed Ashutosh Raghuvanshi as Managing Director and Chief Executive Officer (CEO) of the company with immediate effect.

## Global Markets

Japan stocks were higher after the close on Wednesday, as gains in the Paper & Pulp, Trading and Electrical/Machinery sectors led shares higher. The Nikkei 225 gained 0.20%.

Australia stocks were lower after the close on Wednesday, as losses in the Metals & Mining, Materials and Resources sectors led shares lower. The S&P/ASX 200 declined 0.32%.

MSCI's broadest index of Asia-Pacific shares outside Japan dropped 0.2% weighed down by Australia and South Korea.

DATE: 20/03/19

FII/DII	CASH	MTD	YTD
FII	+1771.61	+24858.03	+37662.43
DII	-1323.17	-12824.75	-10941.53

## Sectoral gainers and losers

SECTOR	%CHANGE IN MARKETCAP	ADV	DEC
Services	1.04%	30	52
Retail & Real Estate	0.77%	19	29
Information Technology	0.49%	42	55
Banking & Financial Services	0.05%	72	114
Conglomerates	-0.04%	11	19
Pharmaceuticals	-0.05%	28	53
Telecommunication	-0.09%	16	12
Engineering & Capital Goods	-0.11%	37	88
Chemicals	-0.13%	32	73
Tobacco	-0.17%	1	4
Miscellaneous	-0.19%	74	104
Consumer Non-durables	-0.54%	11	19
Manufacturing	-0.78%	62	131
Consumer Durables	-0.79%	3	6
Food & Beverages	-0.86%	30	47
Cement & Construction	-0.99%	24	64
Metals & Mining	-1.09%	35	49
Automotive	-1.26%	19	60
Oil & Gas	-1.26%	8	14
Utilities	-2.23%	6	18
Media & Entertainment	-2.58%	10	33

## Stocks breakout on moving average

STOCKS	PRICE	30DMA
INFY	738.95	735.43
AKSHARCHEM	328.60	328.15
AIAENG	1707.30	1705.37
SWANENERGY	106.25	104.98



STOCK continues to trade lower sustaining below the 8 DMA and closed near the support so drawn. The stock may fall further below the given level.

\*\*\*\* TARGETS \*\*\*\*/\*\*\*\* SL \*\*\*\*. For complete call subscribe to our premium reports.



STOCK formed bearish engulfing on daily chart and settled lower. The stock may fall further below the drawn level.

\*\*\*\* TARGETS \*\*\*\*/\*\*\*\* SL \*\*\*\*. For complete call subscribe to our premium reports.



STOCK tanked in last couple of trading sessions with sustainbale sell side volume on chart and closed near the support level. The stock fut may continue the sell trend below the drawn support.

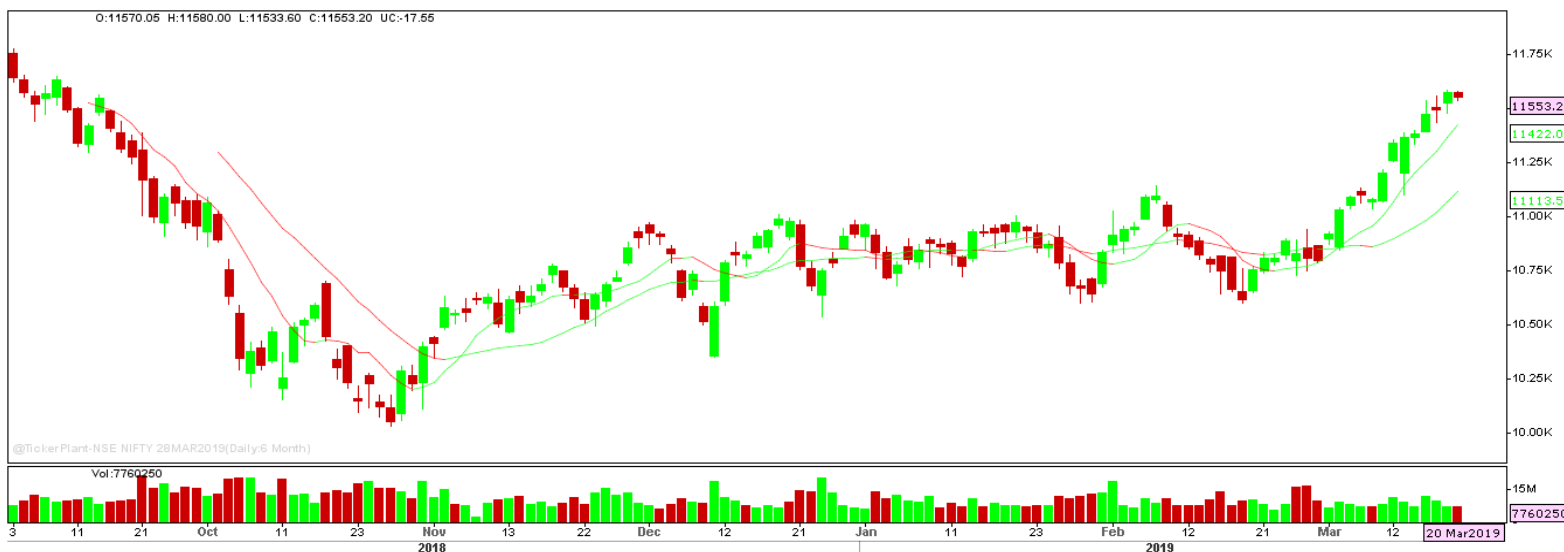
\*\*\*\* TARGETS \*\*\*\*/\*\*\*\* SL \*\*\*\*. [For complete call subscribe to our premium reports.](#)



STOCK continued the bullish trend and closed near the resistance level on bullish note. The stock may give breakout ahead.

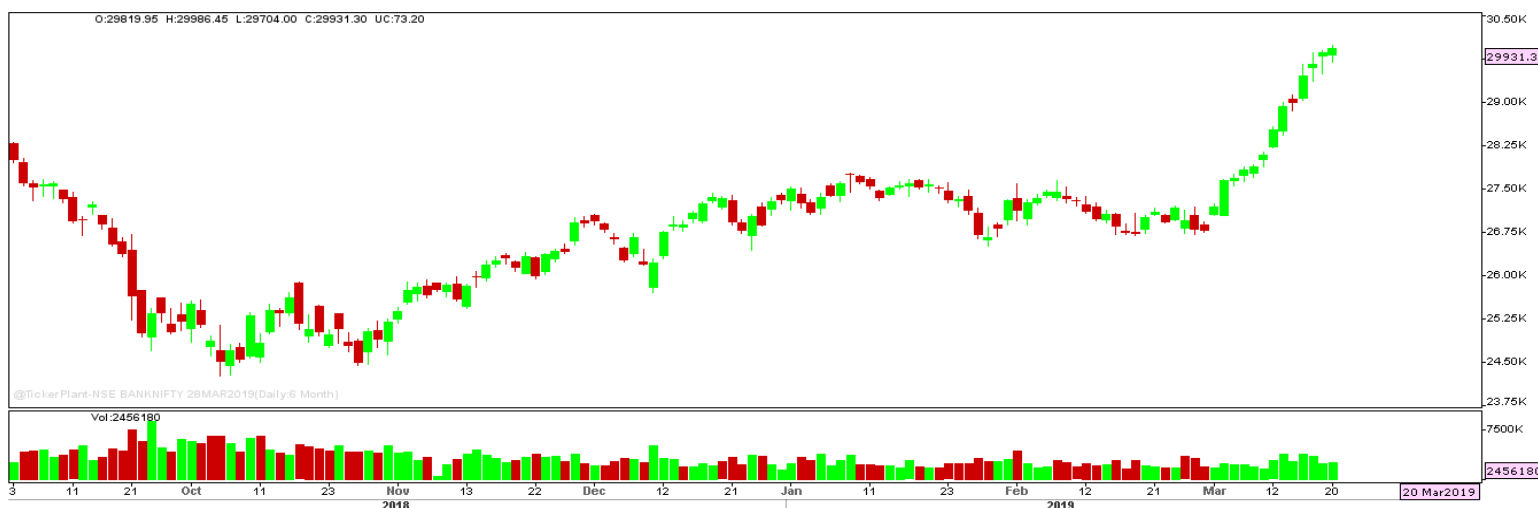
\*\*\*\* TARGETS \*\*\*\*/\*\*\*\* SL \*\*\*\*. [For complete call subscribe to our premium reports.](#)

## Nifty Technical's



Nifty traded flat on the weekly expiry trading session and closed with marginal loss at 11553.20. The next key support and resistance for the market is at 11480 and 11625.

## Bank Nifty Technical's



Bank nifty continues the buying momentum and settled higher at 29931.30. The next key support and resistance for the banking index is at 29700 and 30150.

Index	19-MAR-19	20-MAR-19	Change in OI	% Change
NIFTY	21346050	20552475	-793575	-3.72%

### SCRIPS IN F&O BAN FOR TRADE

ADANIENIT, BEML, IDBI, JETAIRWAYS, JUSTDIAL, RELCAPITAL, RPOWER.

## Stocks at 52 Week High

Stocks	New 52 W/H	Previous High
ARVINDFASN	916.50	872.90
AXISBANK	767	763
HDFCBANK	2300	2291.65
IPCALAB	949	941.80
KTKBANK	134.50	132.50

## Stocks Approaching 52 Week High

Stocks	LTP	52W High
SRF	2401.90	2449.50
ICICIBANK	392.90	400.95
RBLBANK	644.75	658.90
ASIANPAINT	1456.15	1490.60
HAVELLS	757.30	776.75

## Stocks rising continuously 2-3 days

Stocks	LTP
YESBANK	252.15
HINDALCO	207.15
INFY	738.95
SUNPHARMA	474.75

## Stocks at 52 Week Low

Stocks	New 52 W/L	Previous Low
BLUECOAST	40.85	40.85
SALASAR	182.45	192
TVSSRICHAK	2180	2190.40
-	-	-
-	-	-

## Stocks Approaching 52 Week Low

Stocks	LTP	52W Low
ACCELYA	930.05	901.25
OMAXE	207.80	200
GILLETTE	6382.85	6169
OFSS	3400.65	3321.35
LUPIN	753.40	723.65

## Stocks falling continuously 2-3 days

Stocks	LTP
ADANI PORTS	360.60
MARUTI	6673.55
COALINDIA	237.00
IOC	159.00

## Event Calendar(18<sup>th</sup> MARCH 2019 to 23<sup>rd</sup> MARCH 2019)

18/03/19 (Mon)	19/03/19 (Tues)	20/03/19 (Wed)	21/03/19 (Thur)	22/03/19 (Fri)	23/03/19 (Sat)
	ECO DATA: CURRENT ACCOUNT DATA				

## DISCLAIMER

Trifid Research respects and values the Right to Privacy of each and every individual. We are esteemed by the relationship and by becoming our clients; you have a promise from our side that we shall remain loyal to all our clients and non-clients whose information resides with us. This Privacy Policy of Trifid Research applies to the current clients as well as former clients. Below are the word by word credentials of our Privacy Policy:

1. Your information, whether public or private, will not be sold, rented, exchanged, transferred or given to any company or individual for any reason without your consent.
2. The only use we will be bringing to your information will be for providing the services to you for which you have subscribed to us.
3. Your information given to us represents your identity with us. If any changes are brought in any of the fields of which you have provided us the information, you shall bring it to our notice by either calling us or dropping a mail to us.
4. In addition to the service provided to you, your information (mobile number, E-mail ID etc.) can be brought in use for sending you newsletters, surveys, contest information, or information about any new services of the company which will be for your benefit and while subscribing for our services, you agree that Trifid Research has the right to do so.
5. By subscribing to our services, you consent to our Privacy Policy and Terms of Use.
6. Trifid research does not guarantee or is responsible in any which way, for the trade execution of our recommendations, this is the sole responsibility of the client.
7. Due to the market's volatile nature, the trader may/ may not get appropriate opportunity to execute the trades at the mentioned prices and Trifid Research hold's no liability for any profit/ loss incurred whatsoever in this case.
8. It is the responsibility of the client to view the report timely from our Premium member section on our website: [www.trifidresearch.com](http://www.trifidresearch.com) and the same will also be mailed to this registered email id.
9. Trifid research does not hold any liability or responsibility of delay in mail delivery of reports, as this depends on our mail service provider's network infrastructure.
10. The clients can call us for any query related to buying/selling the securities, based on our recommendations.